

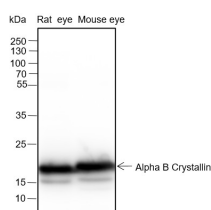
## Recombinant Alpha B Crystallin Monoclonal Antibody

catalog number: **AN301434L**

**Note:** Centrifuge before opening to ensure complete recovery of vial contents.

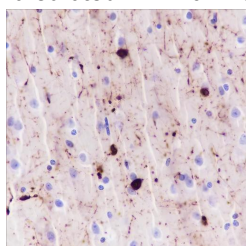
Description	
<b>Reactivity</b>	Human;Rat;Mouse
<b>Immunogen</b>	Recombinant human Alpha B Crystallin fragment
<b>Host</b>	Rabbit
<b>Isotype</b>	IgG, κ
<b>Clone</b>	A129
<b>Purification</b>	Protein A purified
<b>Buffer</b>	PBS, 50% glycerol, 0.05% Proclin 300, 0.05% protein protectant.
Applications	Recommended Dilution
<b>WB</b>	1:500-1:2000
<b>IHC</b>	1:200-1:1000

## Data

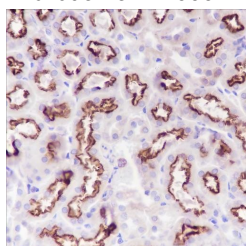


Western Blot with Alpha B Crystallin Monoclonal Antibody at dilution of 1:2000. Lane 1: Rat eyes, Lane 2: Mouse eyes

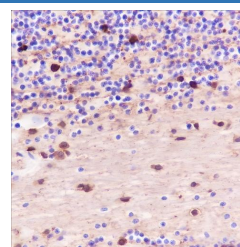
**Observed-MW:22 kDa**  
**Calculated-MW:20 kDa**



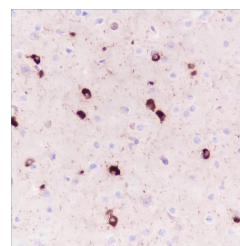
Immunohistochemistry of paraffin-embedded Human cerebrum using Alpha B Crystallin Monoclonal Antibody at dilution of 1:1000.



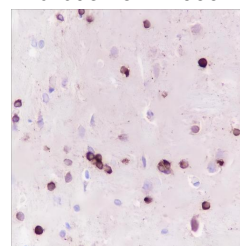
Immunohistochemistry of paraffin-embedded Mouse kidney using Alpha B Crystallin Monoclonal Antibody at dilution of 1:1000.



Immunohistochemistry of paraffin-embedded Human cerebellum using Alpha B Crystallin Monoclonal Antibody at dilution of 1:1000.



Immunohistochemistry of paraffin-embedded Mouse cerebrum using Alpha B Crystallin Monoclonal Antibody at dilution of 1:1000.



Immunohistochemistry of paraffin-embedded Rat cerebrum using Alpha B Crystallin Monoclonal Antibody at dilution of 1:1000.

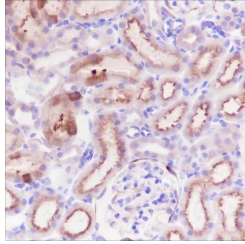
### For Research Use Only

Toll-free: 1-888-852-8623  
Web: [www.elabscience.com](http://www.elabscience.com)

Tel: 1-832-243-6086  
Email: [techsupport@elabscience.com](mailto:techsupport@elabscience.com)

Fax: 1-832-243-6017

Rev. V1.0



Immunohistochemistry of paraffin-embedded Rat kidney  
using Alpha B Crystallin Monoclonal Antibody at dilution of  
1:1000.

## Preparation & Storage

**Storage** Store at -20°C Valid for 12 months. Avoid freeze / thaw cycles.

**Shipping** Ice bag

## Background

Mammalian lens crystallins are divided into alpha, beta, and gamma families. Alpha crystallins are composed of two gene products: alpha-A and alpha-B, for acidic and basic, respectively. Alpha crystallins can be induced by heat shock and are members of the small heat shock protein (HSP20) family. They act as molecular chaperones although they do not renature proteins and release them in the fashion of a true chaperone; instead they hold them in large soluble aggregates. These heterogeneous aggregates consist of 30-40 subunits; the alpha-A and alpha-B subunits have a 3:1 ratio, respectively. Two additional functions of alpha crystallins are an autokinase activity and participation in the intracellular architecture.

## For Research Use Only

Toll-free: 1-888-852-8623  
Web: [www.elabscience.com](http://www.elabscience.com)

Tel: 1-832-243-6086  
Email: [techsupport@elabscience.com](mailto:techsupport@elabscience.com)

Fax: 1-832-243-6017

Rev. V1.0