

## FOXP3 Monoclonal Antibody

**catalog number:** AN200062P

**Note:** Centrifuge before opening to ensure complete recovery of vial contents.

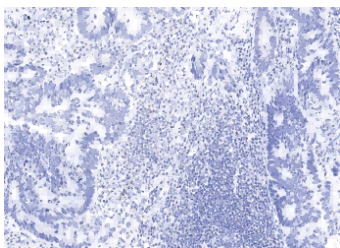
### Description

<b>Reactivity</b>	Human
<b>Immunogen</b>	A synthetic peptide corresponding to the center region of the Human FOXP3
<b>Host</b>	Mouse
<b>Isotype</b>	IgG2a
<b>Clone</b>	5D5
<b>Purification</b>	Protein A
<b>Buffer</b>	0.2 µm filtered solution in PBS

### Applications Recommended Dilution

<b>IHC-P</b>	1:100-1:500
--------------	-------------

### Data



Immunohistochemistry of paraffin-embedded human carcinoma of sigmoid using FOXP3 Monoclonal Antibody at dilution of 1:200.

### Preparation & Storage

<b>Storage</b>	This antibody can be stored at 2°C-8°C for one month without detectable loss of activity. Antibody products are stable for twelve months from date of receipt when stored at -20°C to -80°C. Preservative-Free. Avoid repeated freeze-thaw cycles.
<b>Shipping</b>	Ice bag

### Background

The protein encoded by this gene is a member of the forkhead/winged-helix family of transcriptional regulators. Defects in this gene are the cause of immunodeficiency polyendocrinopathy, enteropathy, X-linked syndrome (IPEX), also known as X-linked autoimmunity-immunodeficiency syndrome. Alternatively spliced transcript variants encoding different isoforms have been identified.

### For Research Use Only