

PE/Cyanine7 Anti-Human CCL2 Antibody[2H5]

Catalog Number: AN00841H

Note: Centrifuge before opening to ensure complete recovery of vial contents.

Description

Reactivity	Human
Host	Armenian Hamster
Isotype	Armenian Hamster IgG, κ
Clone No.	2H5
Isotype Control	PE/Cyanine7 Armenian Hamster IgG Isotype Control[PIP] [Product E-AB-F09852H]
Conjugation	PE/Cyanine 7
Conjugation Information	PE/Cyanine 7 is designed to be excited by the Blue (488 nm), Green (532 nm) and yellow-green (561 nm) lasers and detected using an optical filter centered near 775 nm (e.g., a 780/60 nm bandpass filter).
Storage Buffer	Phosphate buffered solution, pH 7.2, containing 0.09% stabilizer.

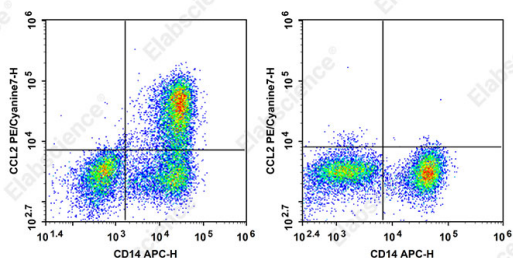
Applications

Recommended usage

FCM

Each lot of this antibody is quality control tested by flow cytometric analysis. **The amount of the reagent is suggested to be used 5 μL of antibody per test (million cells in 100 μL staining volume or per 100 μL of whole blood).** Please check your vial before the experiment. Since applications vary, the appropriate dilutions must be determined for individual use.

Data



Human peripheral blood mononuclear cells (PBMC) were stimulated with (left) or without (right) LPS. The PBMC were surface stained with APC Anti-Human CD14 Antibody then intracellularly stained with PE/Cyanine7 Anti-Human CCL2 Antibody[2H5]. Cells in the monocytes gate were used for analysis.

Preparation & Storage

Storage	Keep as concentrated solution. This product can be stored at 2-8°C for 24 months. Please protected from prolonged exposure to light and do not freeze.
Shipping	Ice bag

Antigen Information

For Research Use Only

Alternate Names

Monocyte chemoattractant protein-1; Monocyte chemoattractant and activating factor (MCAF); JE; Small inducible cytokine A2 (SCYA2); HC-11; P6; Smooth muscle cell chemotactic factor (SMC-CF); CCL2; AN00841

Uniprot ID

P13500

Gene ID

6347

Background

Monocyte chemotactic protein-1 (MCP-1) also known as monocyte chemotactic and activating factor (MCAF) was identified based on its ability to chemoattract monocytes. Subsequently, MCP-1 has also been found to regulate adhesion molecule expression and cytokine production in monocytes. MCP-1 is identical to the product of the JE gene, a PDGF inducible gene. MCP-1 is a member of the beta (C-C) chemokine subfamily, known as CCL2. The 2H5 antibody reacts with mouse, rat, and human MCP-1. The 2H5 antibody can neutralize the bioactivity of natural or recombinant MCP-1.