

## Recombinant Placental Lactogen Monoclonal Antibody

catalog number: **AN301560L**

**Note:** Centrifuge before opening to ensure complete recovery of vial contents.

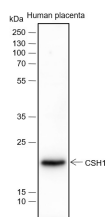
### Description

<b>Reactivity</b>	Human;
<b>Immunogen</b>	Recombinant human Placental Lactogen fragment
<b>Host</b>	Rabbit
<b>Isotype</b>	IgG, $\kappa$
<b>Clone</b>	A259
<b>Purification</b>	Protein A purified
<b>Buffer</b>	PBS, 50% glycerol, 0.05% Proclin 300, 0.05% protein protectant.

### Applications Recommended Dilution

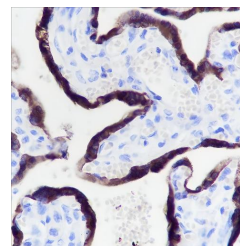
<b>WB</b>	1:500-1:1000
<b>IHC</b>	1:200-1:1000

### Data



Western Blot with Placental Lactogen Monoclonal Antibody at dilution of 1: 1000. Lane 1: Human placenta

**Observed-MW:21 kDa**  
**Calculated-MW:25 kDa**



Immunohistochemistry of paraffin-embedded Human placenta using Placental Lactogen Monoclonal Antibody at dilution of 1:1000.

### Preparation & Storage

<b>Storage</b>	Store at -20°C Valid for 12 months. Avoid freeze / thaw cycles.
<b>Shipping</b>	Ice bag

### Background

Produced only during pregnancy and is involved in stimulating lactation, fetal growth and metabolism. Does not interact with GHR but only activates PRLR through zinc-induced dimerization.

### For Research Use Only