

## PPIL1 Monoclonal Antibody

catalog number: **AN200142P**

**Note:** Centrifuge before opening to ensure complete recovery of vial contents.

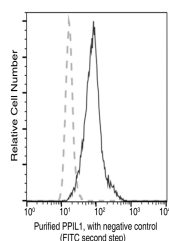
### Description

<b>Reactivity</b>	Human
<b>Immunogen</b>	Recombinant Human PPIL1 protein
<b>Host</b>	Mouse
<b>Isotype</b>	IgG2a
<b>Clone</b>	13B4
<b>Purification</b>	Protein A
<b>Buffer</b>	0.2 µm filtered solution in PBS

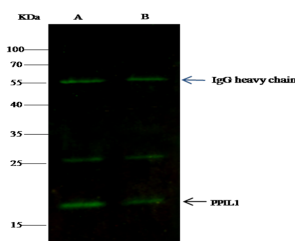
### Applications Recommended Dilution

<b>WB</b>	1:500-1:2000
<b>FCM</b>	1:25-1:100
<b>IP</b>	4-6 µL/mg of lysate

### Data



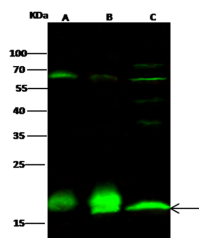
Flow cytometric analysis of Human PPIL1 expression on MCF-7 cells. The cells were stained with purified anti-Human PPIL1, then a FITC-conjugated second step antibody. The fluorescence histograms were derived from gated events with the forward and side light-scatter characteristics of intact cells.



Immunoprecipitation analysis using 2 µL anti-PPIL1 mouse Monoclonal Antibody and 15 µl of 50 % Protein G agarose. Western blot was performed from the immunoprecipitate using PPIL1 mouse Monoclonal Antibody at a dilution of 1:100. Lane A: 0.5 mg Hela Whole Cell Lysate, Lane B: 0.5 mg U87MG Whole Cell Lysate

**Observed-MW: 18 kDa**

**Calculated-MW: 18 kDa**



Western Blot with PPIL1 Monoclonal Antibody at dilution of 1:500. Lane A: U87MG Whole Cell Lysate, Lane B: K562 Whole Cell Lysate, Lane C: Hela Whole Cell Lysate, Lysates/proteins at 30 µg per lane.

**Observed-MW: 18 kDa**

**Calculated-MW: 18 kDa**

### For Research Use Only

## Preparation & Storage

**Storage**

This antibody can be stored at 2°C-8°C for one month without detectable loss of activity. Antibody products are stable for twelve months from date of receipt when stored at -20°C to -80°C. Preservative-Free. Avoid repeated freeze-thaw cycles.

**Shipping**

Ice bag

## Background

This gene is a member of the cyclophilin family of peptidylprolyl isomerases (PPIases). The cyclophilins are a highly conserved, ubiquitous family, members of which play an important role in protein folding, immunosuppression by cyclosporin A, and infection of HIV-2 virions. Based on similarity to other PPIases, this protein could accelerate the folding of proteins and might catalyze the cis-trans isomerization of proline imidic peptide bonds in oligopeptides.

## For Research Use Only

Toll-free: 1-888-852-8623

Web: [www.elabscience.com](http://www.elabscience.com)

Tel: 1-832-243-6086

Email: [techsupport@elabscience.com](mailto:techsupport@elabscience.com)

Fax: 1-832-243-6017

Rev. V1.1