

Recombinant CPT1B Monoclonal Antibody

catalog number: AN301956L

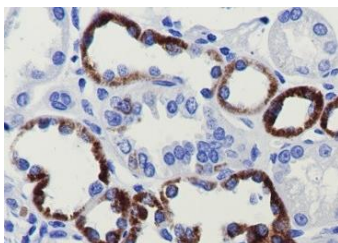
Note: Centrifuge before opening to ensure complete recovery of vial contents.

Description

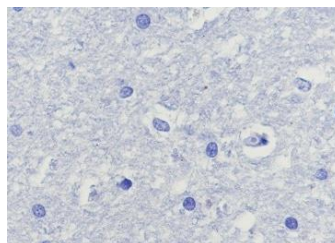
Reactivity	Human;
Immunogen	Recombinant human CPT1B fragment
Host	Rabbit
Isotype	IgG, κ
Clone	A672
Purification	Protein A purified
Buffer	PBS, 50% glycerol, 0.05% Proclin 300, 0.05% protein protectant.

Applications Recommended Dilution

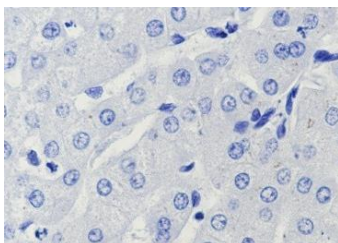
WB	1:1000-1:5000
IHC	1:50



Immunohistochemistry of paraffin-embedded Human kidney using CPT1B Monoclonal Antibody at dilution of 1:50.



Immunohistochemistry of paraffin-embedded Human cerebrum(Negative tissue) using CPT1B Monoclonal Antibody at dilution of 1:50.



Immunohistochemistry of paraffin-embedded Human liver(Negative tissue) using CPT1B Monoclonal Antibody at dilution of 1:50.

Preparation & Storage

Storage	Store at -20°C Valid for 12 months. Avoid freeze / thaw cycles.
Shipping	Ice bag

Background

Carnitine palmitoyltransferase-1 (CPT1), localized to the mitochondrial outer membrane, translocates fatty acids across the mitochondrial membranes and catalyzes the rate-limiting step of β -oxidation. There are three isoforms of this enzyme: CPT1A (liver), CPT1B (muscle), and CPT1C (brain). Deficiency of CPT1A results in an autosomal recessive mitochondrial fatty acid oxidation disorder. Studies have shown that physiological high blood glucose and insulin levels inhibit CPT1B activity in human muscle and therefore divert long-chain fatty acids toward storage in human muscle as triglycerides. Furthermore, mice deficient in CPT1C show less food intake and reduced body weight. These findings suggest that CPT1 may play a role in metabolic syndromes.

For Research Use Only