

## Recombinant S100A1 Monoclonal Antibody

catalog number: **AN301707L**

**Note:** Centrifuge before opening to ensure complete recovery of vial contents.

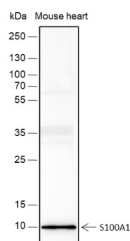
### Description

<b>Reactivity</b>	Human;Mouse
<b>Immunogen</b>	Synthetic peptide derived from human S100A1 protein
<b>Host</b>	Rabbit
<b>Isotype</b>	IgG, $\kappa$
<b>Clone</b>	A415
<b>Purification</b>	Protein A purified
<b>Buffer</b>	PBS, 50% glycerol, 0.05% Proclin 300, 0.05% protein protectant.

### Applications

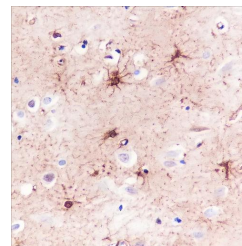
Applications	Recommended Dilution
<b>WB</b>	1:500
<b>IHC</b>	1:200-1:1000
<b>IF</b>	1:50
<b>FCM</b>	1:50-1:100

### Data

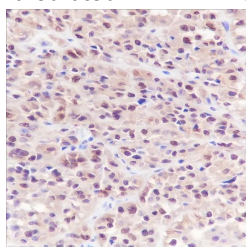


Western Blot with S100A1 Monoclonal Antibody at dilution of 1:500. Lane 1: Mouse heart

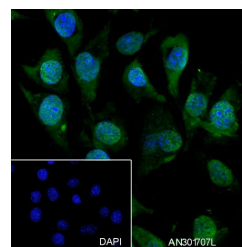
**Observed-MW:11 kDa**  
**Calculated-MW:11 kDa**



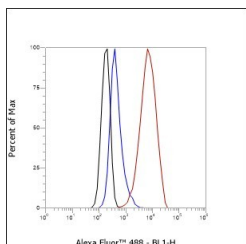
Immunohistochemistry of paraffin-embedded Human cerebrium using S100A1 Monoclonal Antibody at dilution of 1:1000.



Immunohistochemistry of paraffin-embedded Human melanoma using S100A1 Monoclonal Antibody at dilution of 1:1000.



Immunofluorescent analysis of (100% Ice-cold methanol) fixed C2C12 cells using anti-S100A1 Monoclonal Antibody at dilution of 1:50.



### For Research Use Only

Toll-free: 1-888-852-8623  
Web: [www.elabscience.com](http://www.elabscience.com)

Tel: 1-832-243-6086  
Email: [techsupport@elabscience.com](mailto:techsupport@elabscience.com)

Fax: 1-832-243-6017

Rev. V1.0

Flow cytometric analysis of human S100A1 expression on C2C12 cells. Cells were stained with purified anti-Human S100A1, then a Alexa Fluor 488-conjugated second step antibody. The histogram were derived from events with the forward and side light-scatter characteristics of intact cells.

## Preparation & Storage

<b>Storage</b>	Store at -20°C Valid for 12 months. Avoid freeze / thaw cycles.
<b>Shipping</b>	Ice bag

## Background

S100A1 is a member of the S100 protein family, each of which contains two EF-hand calcium-binding motifs. These proteins are localized in the cytoplasm and/or nucleus of a wide range of cells, and are involved in the regulation of a number of cellular processes such as cell cycle progression and differentiation. At least 13 S100 genes are clustered on chromosome 1q21. S100A1 may function in stimulation of  $\text{Ca}^{2+}$ -induced  $\text{Ca}^{2+}$  release, inhibition of microtubule assembly, and inhibition of protein kinase C-mediated phosphorylation. Reduced expression of this protein has been implicated in cardiomyopathies.

## For Research Use Only