

Recombinant CCT2 Monoclonal Antibody

catalog number: **E-AB-81498**

Note: Centrifuge before opening to ensure complete recovery of vial contents.

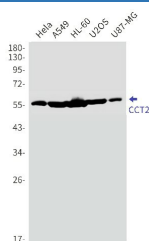
Description

Reactivity	Human;Mouse;Rat
Immunogen	A synthetic peptide of human CCT2
Host	Rabbit
Isotype	IgG
Clone	R07-6C2
Purification	Affinity Purified
Buffer	50mM Tris-Glycine(pH 7.4), 0.15M NaCl, 40% Glycerol, 0.05% stabilizer and 0.05% protective protein.

Applications

Applications	Recommended Dilution
WB	1:1000-1:2000
IHC	1:50-1:100
IF	1:50-1:100

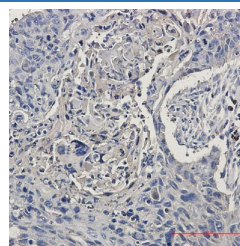
Data



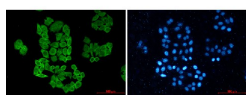
Western blot detection of CCT2 in Hela, A549, HL-60, U2OS, U87-MG cell lysates using CCT2 Rabbit mAb (1:1000 diluted). Predicted band size: 57kDa. Observed band size: 57kDa.

Observed-MW:57 kDa

Calculated-MW:57 kDa



Immunohistochemistry of CCT2 in paraffin-embedded Human lung cancer tissue using CCT2 Rabbit mAb at dilution 1:50



Immunofluorescence of CCT2 (green) in Hela using CCT2 Rabbit mAb at dilution 1:50, and DAPI (blue)

Preparation & Storage

Storage	Store at -20°C Valid for 12 months. Avoid freeze / thaw cycles.
Shipping	The product is shipped with ice pack, upon receipt, store it immediately at the temperature recommended.

Background

For Research Use Only

The protein encoded by this gene is a molecular chaperone that is a member of the chaperonin containing TCP1 complex (CCT), also known as the TCP1 ring complex (TRiC). This complex consists of two identical stacked rings, each containing eight different proteins. Unfolded polypeptides enter the central cavity of the complex and are folded in an ATP-dependent manner. The complex folds various proteins, including actin and tubulin. Two transcript variants encoding different isoforms have been found for this gene.

For Research Use Only

Toll-free: 1-888-852-8623
Web: www.elabscience.com

Tel: 1-832-243-6086
Email: techsupport@elabscience.com

Fax: 1-832-243-6017

Rev. V1.7