

## Elab Fluor® Violet 540 Anti-Mouse/Human CD11b Antibody[M1/70]

Catalog Number: E-AB-F1081T3

**Note:** Centrifuge before opening to ensure complete recovery of vial contents.

### Description

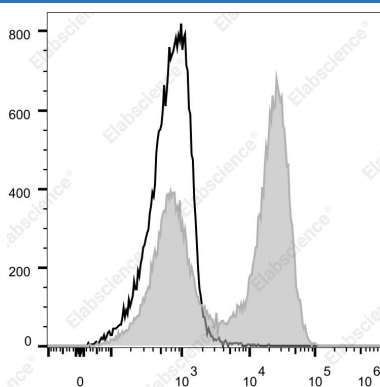
|                         |  |
|-------------------------|--|
| Reactivity              | Human;Mouse  |
| Host                    | Rat  |
| Isotype                 | Rat IgG2b, $\kappa$  |
| Clone No.               | M1/70  |
| Isotype Control         | Elab Fluor® Violet 540 Rat IgG2b, $\kappa$ Isotype Control[LTF-2] [Product E-AB-F09842T3]  |
| Conjugation             | Elab Fluor® Violet 540   |
| Conjugation Information | Elab Fluor® Violet 540 is designed to be excited by the violet laser (405 nm) and detected using an optical filter centered near 548 nm (e.g., a 572/28 nm bandpass filter). |
| Storage Buffer          | Phosphate buffered solution, pH 7.2, containing 0.09% stabilizer and 1% protein protectant.  |

### Applications

### Recommended usage

|     |  |
|-----|--|
| FCM | Each lot of this antibody is quality control tested by flow cytometric analysis. <b>The amount of the reagent is suggested to be used 5 <math>\mu</math>L of antibody per test (million cells in 100 <math>\mu</math>L staining volume or per 100 <math>\mu</math>L of whole blood).</b> Please check your vial before the experiment. Since applications vary, the appropriate dilutions must be determined for individual use. |
|-----|--|

### Data



Staining of C57BL/6 murine bone marrow with Elab Fluor® Violet 540 Anti-Mouse/Human CD11b Antibody[M1/70] (filled

gray histogram) or Elab Fluor® Violet 540 Rat IgG2b,  $\kappa$  Isotype Control(empty black histogram) . Total viable cells were used for analysis.

### Preparation & Storage

|          |   |
|----------|---|
| Storage  | Keep as concentrated solution.<br>This product can be stored at 2-8°C for 12 months. Please protected from prolonged exposure to light and do not freeze. |
| Shipping | Ice bag   |

### Antigen Information

|                 |  |
|-----------------|--|
| Alternate Names | CD11 antigen-like family member B;CD11b;CR-3 alpha chain;Integrin alpha-M;Itgam; Leukocyte adhesion receptor MO1 |
|-----------------|--|

### For Research Use Only

Toll-free: 1-888-852-8623  
Web: [www.elabscience.com](http://www.elabscience.com)

Tel: 1-832-243-6086  
Email: [techsupport@elabscience.com](mailto:techsupport@elabscience.com)

Fax: 1-832-243-6017

Rev. V1.7

**Uniprot ID**

P05555;P11215;

**Gene ID**

16409;3684

**Background**

CD11b is a 170 kD glycoprotein also known as  $\alpha$ M integrin, Mac-1  $\alpha$  subunit, Mol, CR3, and Ly-40. CD11b is a member of the integrin family, primarily expressed on granulocytes, monocytes/macrophages, dendritic cells, NK cells, and subsets of T and B cells. CD11b non-covalently associates with CD18 ( $\beta$ 2 integrin) to form Mac-1. Mac-1 plays an important role in cell-cell interaction by binding its ligands ICAM-1 (CD54), ICAM-2 (CD102), ICAM-4 (CD242), iC3b, and fibrinogen.

**For Research Use Only**

Toll-free: 1-888-852-8623  
Web: [www.elabscience.com](http://www.elabscience.com)

Tel: 1-832-243-6086  
Email: [techsupport@elabscience.com](mailto:techsupport@elabscience.com)

Fax: 1-832-243-6017

Rev. V1.7