

## Purified Anti-Human CD180 Antibody[G28-8]

catalog number: AN002900P

**Note:** Centrifuge before opening to ensure complete recovery of vial contents.

### Description

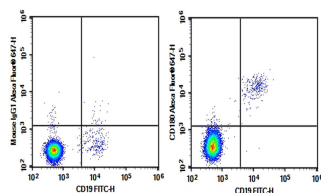
<b>Reactivity</b>	Human
<b>Immunogen</b>	Recombinant Human CD180 protein
<b>Host</b>	Mouse
<b>Isotype</b>	Mouse IgG1, $\kappa$
<b>Clone</b>	G28-8
<b>Purification</b>	>98%, Protein A/G purified
<b>Conjugation</b>	Unconjugated
<b>Buffer</b>	Phosphate-buffered solution, pH 7.2, containing 0.05% non-protein stabilizer. Dialyze to completely remove the stabilizer prior to labeling.

### Applications

### Recommended Dilution

<b>FCM</b>	2 $\mu\text{g/mL}$ ( $1 \times 10^5$ - $5 \times 10^5$ cells)
------------	---

### Data



Human peripheral blood lymphocytes were stained with 0.2  $\mu\text{g}$  Purified Anti-Human CD180 Antibody[G28-8] (Right) and 0.2  $\mu\text{g}$  Mouse IgG1,  $\kappa$  Isotype Control (Left), followed by Alexa Fluor® 647-conjugated Goat Anti-Mouse IgG Secondary Antibody, then anti-Human CD19 FITC-conjugated Monoclonal Antibody.

### Preparation & Storage

<b>Storage</b>	Store at 4°C valid for 12 months or -20°C valid for long term storage, avoid freeze / thaw cycles.
<b>Shipping</b>	Ice bag

### Background

CD180, also known as RP105, is a 105 kD member of the toll-like receptor (TLR) family and is expressed on most B cells, monocytes/macrophages and dendritic cells. The TLR family's structural characteristics are critically involved in protein-protein signaling interactions leading to the activation of the innate immune system. Additionally, MD-1, a secretory protein, associates with CD180 (RP105) at the cell surface and this complex, in conjunction with TLR4, recognizes bacterial LPS. The human CD180 (RP105) gene maps to 5q12. The MHR73-11 antibody is able to activate B cells and to protect against irradiation- or dexamethasone-induced apoptosis.

### For Research Use Only