

MGLL Polyclonal Antibody

Catalog Number:E-AB-16617

Note: Centrifuge before opening to ensure complete recovery of vial contents.

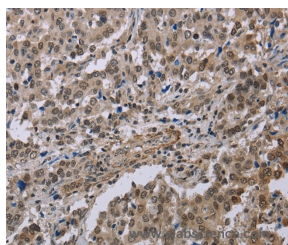
Description

Reactivity	Human
Immunogen	Synthetic peptide of human MGLL
Host	Rabbit
Isotype	IgG
Purification	Affinity purification
Conjugation	Unconjugated
Formulation	PBS with 0.05% sodium azide and 50% glycerol, PH7.4

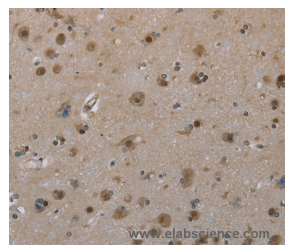
Applications Recommended Dilution

IHC	1:50-1:200
------------	------------

Data



Immunohistochemistry of paraffin-embedded Human liver cancer tissue using MGLL Polyclonal Antibody at dilution 1:40



Immunohistochemistry of paraffin-embedded Human brain tissue using MGLL Polyclonal Antibody at dilution 1:40

Preparation & Storage

Storage	Store at -20°C. Avoid freeze / thaw cycles.
----------------	---

Background

This gene encodes a serine hydrolase of the AB hydrolase superfamily that catalyzes the conversion of monoacylglycerides to free fatty acids and glycerol. The encoded protein plays a critical role in several physiological processes including pain and nociception through hydrolysis of the endocannabinoid 2-arachidonoylglycerol. Expression of this gene may play a role in cancer tumorigenesis and metastasis. Alternatively spliced transcript variants encoding multiple isoforms have been observed for this gene.

For Research Use Only

A Reliable Research Partner in Life Science and Medicine

Toll-free: 1-888-852-8623

Web: www.elabscience.com

Tel: 1-832-243-6086

Email: techsupport@elabscience.com

Fax: 1-832-243-6017