

Recombinant Parvalbumin Monoclonal Antibody

catalog number: **AN301345L**

Note: Centrifuge before opening to ensure complete recovery of vial contents.

Description

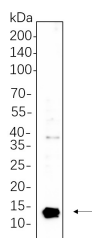
Reactivity	Human;Mouse;Rat
Immunogen	Recombinant Human Parvalbumin protein
Host	Rabbit
Isotype	IgG,k
Clone	B1112
Purification	Protein A
Buffer	PBS, 50% glycerol, 0.05% Proclin 300, 0.05% protein protectant.

Applications

Recommended Dilution

IHC	1:200-1:1000
WB	1:2000-1:10000
IF	1:200-1:1000
ELISA	1:5000-1:20000
IP	1:50-1:200

Data



Western Blot with Recombinant Parvalbumin Monoclonal Antibody at dilution of 1:1000 dilution. Lane A: U-251 MG whole cell lysate.

Observed-MW:12 kDa

Calculated-MW:12 kDa

Preparation & Storage

Storage	Store at -20°C Valid for 12 months. Avoid freeze / thaw cycles.
Shipping	Ice bag

Background

The protein encoded by this gene is a high affinity calcium ion-binding protein that is structurally and functionally similar to calmodulin and troponin C. The encoded protein is thought to be involved in muscle relaxation. Alternative splicing results in multiple transcript variants.

For Research Use Only