

# Recombinant Human CD19/Leu-12 Protein (Fc Tag)

Catalog Number: PKSH032206



**Note:** Centrifuge before opening to ensure complete recovery of vial contents.

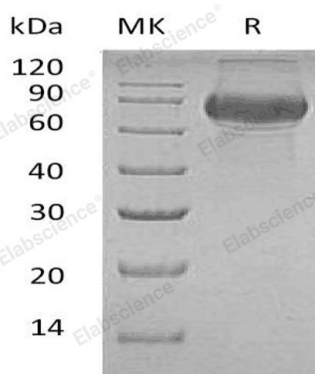
## Description

<b>Species</b>	Human
<b>Mol_Mass</b>	57.3 kDa
<b>Accession</b>	P15391
<b>Bio-activity</b>	Immobilized Human FMC63 at 2µg/ml(100 µl/well) can bind Human CD19-Fc. The ED <sub>50</sub> of Human CD19-Fc is 55.28 ug/ml.

## Properties

<b>Purity</b>	> 95 % as determined by reducing SDS-PAGE.
<b>Endotoxin</b>	< 1.0 EU per µg of the protein as determined by the LAL method.
<b>Storage</b>	Generally, lyophilized proteins are stable for up to 12 months when stored at -20 to -80 °C. Reconstituted protein solution can be stored at 4-8°C for 2-7 days. Aliquots of reconstituted samples are stable at < -20°C for 3 months.
<b>Shipping</b>	This product is provided as lyophilized powder which is shipped with ice packs.
<b>Formulation</b>	Lyophilized from a 0.2 µm filtered solution of 20mM PB, 150mM NaCl, pH 7.4. Normally 5% - 8% trehalose, mannitol and 0.01% Tween 80 are added as protectants before lyophilization. Please refer to the specific buffer information in the printed manual.
<b>Reconstitution</b>	Please refer to the printed manual for detailed information.

## Data



> 95 % as determined by reducing SDS-PAGE.

## Background

CD19 is a single-pass type I membrane protein containing 2 Ig-like C2-type (immunoglobulin-like) domains. CD19 is expressed on follicular dendritic cells and B cells. In fact; it is present on B cells from earliest recognizable B-lineage cells during development to B-cell blasts but is lost on maturation to plasma cells. CD19 primarily acts as a B cell co-receptor in conjunction with CD21 and CD81. Upon activation; the cytoplasmic tail of CD19 becomes phosphorylated; which leads to binding by Src-family kinases and recruitment of PI-3 kinase. CD19 Assembles with the antigen receptor of B lymphocytes in order to decrease the threshold for antigen receptor-dependent stimulation. Defects in CD19 are the cause of immunodeficiency common variable type 3 (CVID3) which is a primary immunodeficiency characterized by antibody deficiency; hypogammaglobulinemia; recurrent bacterial infections and an inability to mount an antibody response to antigen.

## For Research Use Only

A Reliable Research Partner in Life Science and Medicine  
Tel:400-999-2100

Email:[techsupport@elabscience.cn](mailto:techsupport@elabscience.cn)

Web:[www.elabscience.cn](http://www.elabscience.cn)

Rev. V3.5