

GFP Monoclonal Antibody

catalog number: E-AB-48043

Note: Centrifuge before opening to ensure complete recovery of vial contents.

Description

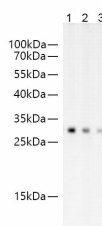
Reactivity	All
Immunogen	Recombinant GFP protein expressed by E.coli
Host	Mouse
Isotype	IgG2a
Clone	2A7
Purification	Protein A/G Purification
Conjugation	Unconjugated
Buffer	PBS with 0.05% proclin 300, 1% protective protein and 50% glycerol, pH7.4

Applications

Recommended Dilution

WB	1:100000-200000
IF	1:8000-16000
IP	3ug/sample

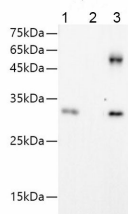
Data



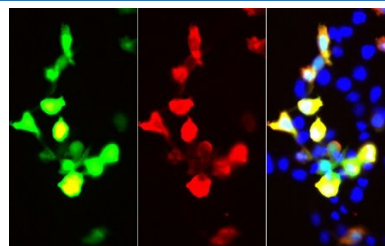
Western blot of GFP protein with anti-GFP at dilution of 1:50000, 1:100000, 200000. Lane 1: 293F cells transfected with GFP-Tag fusion protein, lane 2: 293F cells transfected with GFP-Tag fusion protein, Lane 3: 293F cells transfected with GFP-Tag fusion protein

Observed-MV:32 kDa

Calculated-MV:32 kDa



IP Result of 293F cells transfected with GFP-Tag fusion protein, using anti-GFP-Tag mouse monoclonal antibody. Lane 1: input, lane 2: mouse IgG2a Isotype Control, Lane 3: anti-GFP-Tag monoclonal antibody



Immunofluorescent analysis of 293F cells transfected with the FLAG-GFP, using anti-GFP-Tag Monoclonal Antibody at dilution of 1:50000.

Preparation & Storage

Storage Store at -20°C Valid for 12 months. Avoid freeze / thaw cycles.

For Research Use Only

Shipping

The product is shipped with ice pack, upon receipt, store it immediately at the temperature recommended.

Background

The green fluorescent protein (GFP) is a protein that exhibits bright green fluorescence when exposed to light in the blue to ultraviolet range. It is first isolated from the jellyfish *Aequorea victoria* and is frequently used as a reporter of expression. GFP is widely used in gene expression, tracing and protein subcellular localization.