

# ANO2 Polyclonal Antibody

Catalog Number: E-AB-67586



**Note:** Centrifuge before opening to ensure complete recovery of vial contents.

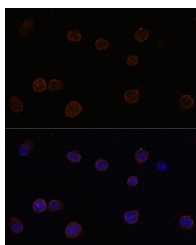
## Description

<b>Reactivity</b>	Human, Mouse, Rat
<b>Immunogen</b>	Recombinant fusion protein of human ANO2 (NP_001265526.1).
<b>Host</b>	Rabbit
<b>Isotype</b>	IgG
<b>Purification</b>	Affinity purification
<b>Conjugation</b>	Unconjugated
<b>Formulation</b>	PBS with 0.02% sodium azide, 50% glycerol, pH7.3.

## Applications Recommended Dilution

<b>IF</b>	1:50-1:100
-----------	------------

## Data



Immunofluorescence analysis of Y79 cells using ANO2 Polyclonal Antibody at dilution of 1:100 (40x lens). Blue: DAPI for nuclear staining.

## Preparation & Storage

**Storage** Store at -20°C. Avoid freeze / thaw cycles.

## Background

ANO2 (Anoctamin 2) is a Protein Coding gene. Diseases associated with ANO2 include Von Willebrand Disease, Type 3 and Gnathodiaphyseal Dysplasia. Among its related pathways are Transport of glucose and other sugars, bile salts and organic acids, metal ions and amine compounds and Ion channel transport. Gene Ontology (GO) annotations related to this gene include protein homodimerization activity and intracellular calcium activated chloride channel activity. An important paralog of this gene is ANO1.

## For Research Use Only

A Reliable Research Partner in Life Science and Medicine

Toll-free: 1-888-852-8623

Web: [www.elabscience.com](http://www.elabscience.com)

Tel: 1-832-243-6086

Email: [techsupport@elabscience.com](mailto:techsupport@elabscience.com)

Fax: 1-832-243-6017