

Recombinant Human ESAM Protein (aa 30-247, His Tag)

Catalog Number: PKSH033692

Note: Centrifuge before opening to ensure complete recovery of vial contents.

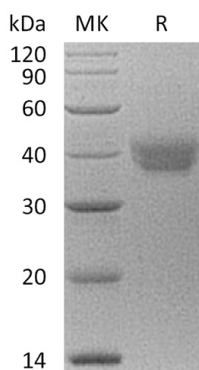
Description

Species	Human
Source	HEK293 Cells-derived Human ESAM protein Gln30-Ala247, with an C-terminal His
Calculated MW	24.8 kDa
Observed MW	38 kDa
Accession	Q96AP7
Bio-activity	Not validated for activity

Properties

Purity	> 95 % as determined by reducing SDS-PAGE.
Endotoxin	< 1.0 EU per µg of the protein as determined by the LAL method.
Storage	Generally, lyophilized proteins are stable for up to 12 months when stored at -20 to -80°C. Reconstituted protein solution can be stored at 4-8°C for 2-7 days. Aliquots of reconstituted samples are stable at < -20°C for 3 months.
Shipping	This product is provided as lyophilized powder which is shipped with ice packs.
Formulation	Lyophilized from a 0.2 µm filtered solution of 20mM PB, 150mM NaCl, pH 7.2. Normally 5% - 8% trehalose, mannitol and 0.01% Tween 80 are added as protectants before lyophilization.
	Please refer to the specific buffer information in the printed manual.
Reconstitution	Please refer to the printed manual for detailed information.

Data



> 95 % as determined by reducing SDS-PAGE.

Background

Endothelial Cell Adhesion Molecule (ESAM) is a 55 kDa type I transmembrane glycoprotein member of the JAM family of immunoglobulin superfamily molecules. The 390 amino acid Human ESAM contains a 216 amino acid extracellular domain (ECD) with a V-type and a C2-type immunoglobulin (Ig) domain. ESAM is specifically expressed at endothelial tight junctions and on activated platelets and performs homophilic adhesion activity. The adaptor protein membrane-associated guanylate kinase MAGI-1 has been identified as an intracellular binding partner of ESAM. In addition; ESAM at endothelial tight junctions participates in the migration of neutrophils through the vessel wall; possibly by influencing endothelial cell contacts. ESAM-deficient mice were described with lowered angiogenic potential; and accordingly; overexpression of ESAM is closely associated with certain tumor growth and metastasis. ESAM is expressed on endothelial cells; activated platelets and megakaryocytes. The ECD of human and mouse ESAM share 69% amino acid identity.

For Research Use Only

Toll-free: 1-888-852-8623
Web: www.elabscience.com

Tel: 1-832-243-6086
Email: techsupport@elabscience.com

Fax: 1-832-243-6017