

AMY1A Polyclonal Antibody

catalog number: D-AB-10353L

Note: Centrifuge before opening to ensure complete recovery of vial contents.

Description

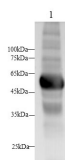
Reactivity	Mouse
Immunogen	Recombinant Human AMY1A protein expressed by Mammalian
Host	Rabbit
Isotype	Rabbit IgG
Purification	Antigen Affinity Purification
Conjugation	Unconjugated
buffer	PBS with 0.05% proclin 300, 1% protective protein and 50% glycerol,pH7.4

Applications

Recommended Dilution

WB	1:500-1:1000
-----------	--------------

Data



Western blot with AMY1A Polyclonal antibody at dilution of

1:500.lane 1:Mouse pancreas

Observed-MV:58 kDa

Calculated-MV:58 kDa

Preparation & Storage

Storage	Store at -20°C Valid for 12 months. Avoid freeze / thaw cycles.
Shipping	The product is shipped with ice pack, upon receipt, store it immediately at the temperature recommended.

Background

Calcium-binding enzyme that initiates starch digestion in the oral cavity.Catalyzes the hydrolysis of internal (1->4)-alph a-D-glucosidic bonds,yielding a mixture of maltose,isomaltose,small amounts of glucose as well as small linear and branched oligosaccharides called dextrans.

For Research Use Only