

# Recombinant Human DCBLD2/ESDN Protein (aa 67-528, His Tag)



Catalog Number:PKSH032343

**Note:** Centrifuge before opening to ensure complete recovery of vial contents.

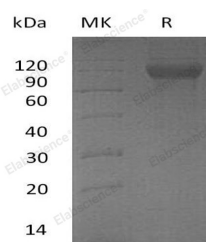
## Description

<b>Synonyms</b>	Discoidin;CUB and LCCL domain-containing protein 2;DCBLD2;CUB;LCCL and coagulation factor V/VIII-homology domains protein 1;Endothelial and smooth muscle cell-derived neuropilin-like protein;DCBLD2;CLCP1;ESDN
<b>Species</b>	Human
<b>Expression Host</b>	HEK293 Cells
<b>Sequence</b>	Gln67-Ala528
<b>Accession</b>	Q96PD2
<b>Calculated Molecular Weight</b>	52.2 kDa
<b>Observed molecular weight</b>	80-110 kDa
<b>Tag</b>	C-His

## Properties

<b>Purity</b>	> 95 % as determined by reducing SDS-PAGE.
<b>Endotoxin</b>	< 1.0 EU per µg of the protein as determined by the LAL method.
<b>Storage</b>	Generally, lyophilized proteins are stable for up to 12 months when stored at -20 to -80°C. Reconstituted protein solution can be stored at 4-8°C for 2-7 days. Aliquots of reconstituted samples are stable at < -20°C for 3 months.
<b>Shipping</b>	This product is provided as lyophilized powder which is shipped with ice packs.
<b>Formulation</b>	Lyophilized from a 0.2 µm filtered solution of PBS, pH 7.4. Normally 5 % - 8 % trehalose, mannitol and 0.01% Tween80 are added as protectants before lyophilization. Please refer to the specific buffer information in the printed manual.
<b>Reconstitution</b>	Please refer to the printed manual for detailed information.

## Data



> 95 % as determined by reducing SDS-PAGE.

## Background

Discoidin, CUB and LCCL domain-containing protein 2(DCBLD2) is a protein contains 1 CUB domain, 1 F5/8 type C domain, 1 LCCL domain. DCBLD2 is Highly expressed in testis, heart, skeletal muscle and also in cultured vascular smooth muscle cells. Model organisms have been used in the study of DCBLD2 function. Male and female animals underwent a standardized phenotypic screen to determine the effects of deletion. Additional screens performed: In-depth immunological phenotyping.

## For Research Use Only

A Reliable Research Partner in Life Science and Medicine

Toll-free: 1-888-852-8623

Web: [www.elabscience.com](http://www.elabscience.com)

Tel: 1-832-243-6086

Email: [techsupport@elabscience.com](mailto:techsupport@elabscience.com)

Fax: 1-832-243-6017