

HRP-conjugated beta Tubulin Monoclonal Antibody

catalog number: **AN00293HP**

Note: Centrifuge before opening to ensure complete recovery of vial contents.

Description

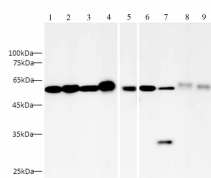
Reactivity	Human;Mouse;Rat;Zebrafish
Immunogen	Recombinant human TUBB protein by E. Coli
Host	Mouse
Isotype	IgG
Clone	2E8-2
Purification	Protein A/G Purification
Buffer	PBS with 0.05% Proclin300, 1% protective protein and 50% glycerol, pH7.4

Applications

Recommended Dilution

WB	1:2500-1:5000
-----------	---------------

Data



Western blot with HRP-conjugated beta Tubulin Monoclonal

Antibody at dilution of 1:5000. lane 1:Raji whole cell lysate, lane 2: Jurkat whole cell lysate, lane 3: HL-60 whole cell lysate, lane 4:U87-MG whole cell lysate, lane 5:mouse lung whole cell lysate, lane 6:Raw264.7 whole cell lysate, lane 7:C6 whole cell lysate, lane 8:zebrafish whole cell lysate, lane 9:zebrafish whole cell lysate

Observed-MW:55 kDa

Calculated-MW:55 kDa

Preparation & Storage

Storage	Store at -20°C Valid for 12 months. Avoid freeze / thaw cycles. Protected from prolonged exposure to light.
Shipping	The product is shipped with ice pack, upon receipt, store it immediately at the temperature recommended.

Background

In eukaryotes there are six members of the tubulin superfamily. α - and β -tubulins polymerize into microtubules, a major component of the eukaryotic cytoskeleton. Microtubules function in many essential cellular processes, including mitosis. Both α and β tubulins have a mass of around 50 kDa. Tubulin was long thought to be specific to eukaryotes. Beta-tubulin gene is commonly used as a loading control for western blot.

For Research Use Only