

# PTGER2 Polyclonal Antibody

Catalog Number: E-AB-16732



**Note:** Centrifuge before opening to ensure complete recovery of vial contents.

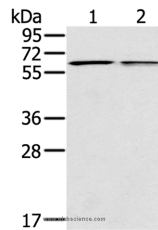
## Description

<b>Reactivity</b>	Human, Mouse
<b>Immunogen</b>	Synthetic peptide of human PTGER2
<b>Host</b>	Rabbit
<b>Isotype</b>	IgG
<b>Purification</b>	Affinity purification
<b>Conjugation</b>	Unconjugated
<b>Formulation</b>	PBS with 0.05% sodium azide and 50% glycerol, PH7.4

## Applications Recommended Dilution

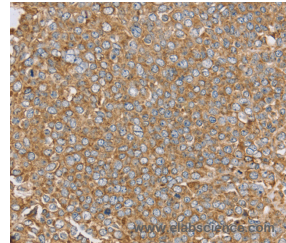
<b>WB</b>	1:200-1:1000
<b>IHC</b>	1:50-1:200

## Data

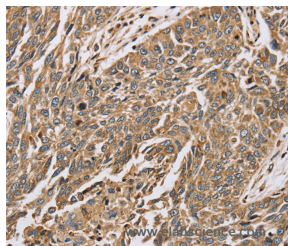


Western Blot analysis of Mouse liver and lung tissue using PTGER2 Polyclonal Antibody at dilution of 1:200

**Calculated Mw: 40kDa**



Immunohistochemistry of paraffin-embedded Human ovarian cancer using PTGER2 Polyclonal Antibody at dilution of 1:45



Immunohistochemistry of paraffin-embedded Human lung cancer using PTGER2 Polyclonal Antibody at dilution of 1:45

## Preparation & Storage

**Storage** Store at -20°C. Avoid freeze / thaw cycles.

## Background

This gene encodes a receptor for prostaglandin E2, a metabolite of arachidonic acid which has different biologic activities in a wide range of tissues. Mutations in this gene are associated with aspirin-induced susceptibility to asthma.

## For Research Use Only

A Reliable Research Partner in Life Science and Medicine

Toll-free: 1-888-852-8623

Web: [www.elabscience.com](http://www.elabscience.com)

Tel: 1-832-243-6086

Email: [techsupport@elabscience.com](mailto:techsupport@elabscience.com)

Fax: 1-832-243-6017