

## Recombinant Mouse IL-1ra/IL-1F3 protein (His Tag)

**Catalog Number: PDMM100198**

**Note:** Centrifuge before opening to ensure complete recovery of vial contents.

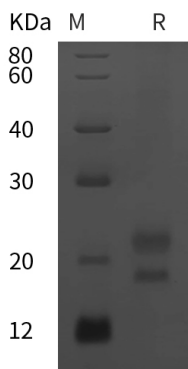
### Description

<b>Species</b>	Mouse
<b>Source</b>	HEK293 Cells-derived Mouse IL-1ra protein Arg27-Gln178, with an C-terminal His
<b>Calculated MW</b>	16.6 kDa
<b>Observed MW</b>	22 kDa
<b>Accession</b>	P25085
<b>Bio-activity</b>	Not validated for activity

### Properties

<b>Purity</b>	> 95% as determined by reducing SDS-PAGE.
<b>Endotoxin</b>	< 1.0 EU/mg of the protein as determined by the LAL method
<b>Storage</b>	Generally, lyophilized proteins are stable for up to 12 months when stored at -20 to -80 °C. Reconstituted protein solution can be stored at 4-8°C for 2-7 days. Aliquots of reconstituted samples are stable at < -20°C for 3 months.
<b>Shipping</b>	This product is provided as lyophilized powder which is shipped with ice packs.
<b>Formulation</b>	Lyophilized from a 0.2 µm filtered solution in PBS with 5% Trehalose and 5% Mannitol.
<b>Reconstitution</b>	It is recommended that sterile water be added to the vial to prepare a stock solution of 0.5 mg/mL. Concentration is measured by UV-Vis.

### Data



> 95 % as determined by reducing SDS-PAGE.

### Background

Interleukin-1 receptor antagonist protein (Il1m), also known as IL-1ra, IRAP or IL1 inhibitor, is a member of the interleukin 1 cytokine family. This protein inhibits the activities of interleukin 1 alpha (IL1A) and interleukin 1 beta (IL1B), and modulates a variety of interleukin 1 related immune and inflammatory responses. The mouse Il1m gene encodes a 178 amino acids (aa) protein with a 26 aa signal peptide. Mouse Il1m protein shares 26% and 19% identity with its homologues IL-1 beta and IL-1 alpha, respectively. Il1m can Inhibits the activity of interleukin-1 by binding to receptor IL1R1 and preventing its association with the coreceptor IL1RAP for signaling, but has no interleukin-1 like activity. Recently, an recombinant human Il1m protein is used in the treatment of rheumatoid arthritis, an autoimmune disease in which IL-1 plays a key role.

### For Research Use Only