

CD327 Polyclonal Antibody

catalog number: E-AB-13123

Note: Centrifuge before opening to ensure complete recovery of vial contents.

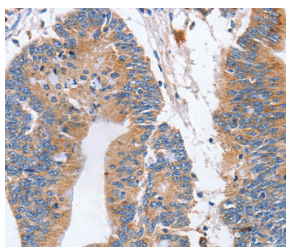
| Description | |
|--------------|--|
| Reactivity | Human |
| Immunogen | Synthetic peptide of human SIGLEC6 |
| Host | Rabbit |
| Isotype | IgG |
| Purification | Affinity purification |
| Conjugation | Unconjugated |
| Buffer | Phosphate buffered solution, pH 7.4, containing 0.05% stabilizer and 50% glycerol. |
| Applications | Recommended Dilution |
| WB | 1:500-1:2000 |
| IHC | 1:50-1:200 |

Data

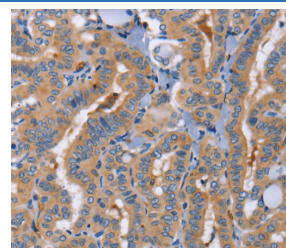


Western Blot analysis of Human placenta tissue using CD327 Polyclonal Antibody at dilution of 1:1000

Calculated-MW:50 kDa



Immunohistochemistry of paraffin-embedded Human colon cancer using CD327 Polyclonal Antibody at dilution of 1:70



Immunohistochemistry of paraffin-embedded Human thyroid cancer using CD327 Polyclonal Antibody at dilution of 1:70

Preparation & Storage

| | |
|-----------------|--|
| Storage | Store at -20°C Valid for 12 months. Avoid freeze / thaw cycles. |
| Shipping | The product is shipped with ice pack, upon receipt, store it immediately at the temperature recommended. |

Background

The SIGLEC6 gene to 19q13.3, which is where the CD33 gene is located. Putative adhesion molecule that mediates sialic-acid dependent binding to cells. Binds to alpha-2,6-linked sialic acid. The sialic acid recognition site may be masked by cis interactions with sialic acids on the same cell surface. Expressed at high levels in placenta (cyto- and syncytiotrophoblastic cells) and at lower levels in spleen, peripheral blood leukocytes (predominantly B-cells) and small intestine.

For Research Use Only