

GPR22 Polyclonal Antibody

catalog number: E-AB-19931

Note: Centrifuge before opening to ensure complete recovery of vial contents.

Description

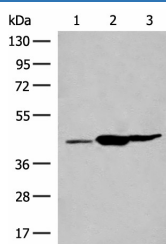
Reactivity	Human;Mouse
Immunogen	Synthetic peptide of human GPR22
Host	Rabbit
Isotype	IgG
Purification	Antigen affinity purification
Conjugation	Unconjugated
Buffer	Phosphate buffered solution, pH 7.4, containing 0.05% stabilizer and 50% glycerol.

Applications

Recommended Dilution

WB	1:500-1:2000
IHC	1:40-1:200

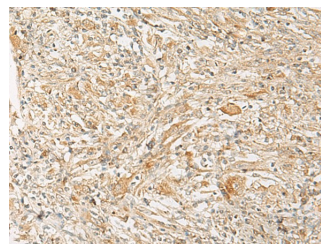
Data



Western blot analysis of Mouse liver tissue Mouse kidney tissue Rat brain tissue lysates using GPR22 Polyclonal Antibody at dilution of 1:500

Observed-MW:Refer to figures

Calculated-MW:49 kDa



Immunohistochemistry of paraffin-embedded Human liver cancer tissue using GPR22 Polyclonal Antibody at dilution of 1:50(×200)

Preparation & Storage

Storage	Store at -20°C Valid for 12 months. Avoid freeze / thaw cycles.
Shipping	The product is shipped with ice pack,upon receipt,store it immediately at the temperature recommended.

Background

This gene is a member of the G-protein coupled receptor 1 family and encodes a multi-pass membrane protein.