

Recombinant Human Creatine Kinase, Muscle/CKM Protein (His Tag)



Catalog Number:PKSH032285

Note: Centrifuge before opening to ensure complete recovery of vial contents.

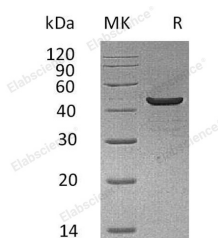
Description

Synonyms	Creatine kinase M-type;Creatine kinase M chain;M-CK;CKM;CKMM
Species	Human
Expression Host	HEK293 Cells
Sequence	Met 1-Lys381
Accession	AAP35439.1
Calculated Molecular Weight	44.1 kDa
Observed molecular weight	46 kDa
Tag	C-His

Properties

Purity	> 95 % as determined by reducing SDS-PAGE.
Endotoxin	< 1.0 EU per µg of the protein as determined by the LAL method.
Storage	Store at < -20°C, stable for 6 months. Please minimize freeze-thaw cycles.
Shipping	This product is provided as liquid. It is shipped at frozen temperature with blue ice/gel packs. Upon receipt, store it immediately at < - 20°C.
Formulation	Supplied as a 0.2 µm filtered solution of 20mM Tris-HCl, 150mM NaCl, 10% Glycerol, pH 7.5.
Reconstitution	Not Applicable

Data



> 95 % as determined by reducing SDS-PAGE.

Background

Creatine kinase M-type is also known as Creatine kinase M chain, M-CK. It is a protein that in humans is encoded by the CKM gene. It belongs to the ATP:guanido phosphotransferase family, containing 1 phosphagen kinase C-terminal domain and 1 phosphagen kinase N-terminal domain. Creatine kinase M-type can reversibly catalyzes the transfer of phosphate between ATP and various phosphagens. It plays a central role in energy transduction in tissues with large, fluctuating energy demands, such as skeletal muscle, heart, brain and spermatozoa.

For Research Use Only

A Reliable Research Partner in Life Science and Medicine

Toll-free: 1-888-852-8623

Web: www.elabscience.com

Tel: 1-832-243-6086

Email: techsupport@elabscience.com

Fax: 1-832-243-6017