

Recombinant Human KLF6 Protein

Catalog Number: PKSH032677

Note: Centrifuge before opening to ensure complete recovery of vial contents.

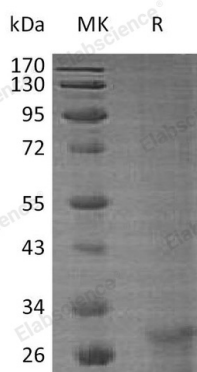
Description

Species	Human
Source	E.coli-derived Human KLF6 protein Met 1-Ser109
Calculated MW	12.6 kDa
Observed MW	13-19 kDa
Accession	Q99612-3
Bio-activity	Not validated for activity

Properties

Purity	> 95 % as determined by reducing SDS-PAGE.
Endotoxin	< 1.0 EU per µg of the protein as determined by the LAL method.
Storage	Generally, lyophilized proteins are stable for up to 12 months when stored at -20 to -80°C. Reconstituted protein solution can be stored at 4-8°C for 2-7 days. Aliquots of reconstituted samples are stable at < -20°C for 3 months.
Shipping	This product is provided as lyophilized powder which is shipped with ice packs.
Formulation	Lyophilized from a 0.2 µm filtered solution of PBS, pH 7.4. Normally 5% - 8% trehalose, mannitol and 0.01% Tween 80 are added as protectants before lyophilization.
Reconstitution	Please refer to the specific buffer information in the printed manual. Please refer to the printed manual for detailed information.

Data



> 95 % as determined by reducing SDS-PAGE.

Background

Krüppel-Like Factor 6 (KLF6) belongs to the krüppel C2H2-type zinc-finger protein family. KLF6 contains three C2H2-type zinc fingers and localizes in the nucleus. KLF6 expression is highest in the placenta followed by spleen, thymus, prostate, testis, small intestine and colon. However, it is weakly expressed in the pancreas, lung, liver, heart, and skeletal muscle. KLF6 functions as a transcriptional activator and could play a role in B-cell growth and development. Defects in KLF6 will result in gastric cancer and prostate cancer.

For Research Use Only

Toll-free: 1-888-852-8623
Web: www.elabscience.com

Tel: 1-832-243-6086
Email: techsupport@elabscience.com

Fax: 1-832-243-6017