

# Recombinant Human PLK1/PLK-1 Protein (His Tag)

Catalog Number:PKSH030399



**Note:** Centrifuge before opening to ensure complete recovery of vial contents.

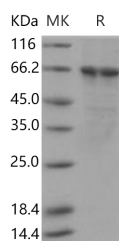
## Description

<b>Synonyms</b>	PLK;STPK13
<b>Species</b>	Human
<b>Expression Host</b>	Baculovirus-Insect Cells
<b>Sequence</b>	Met 1-Ser 603
<b>Accession</b>	NP_005021.2
<b>Calculated Molecular Weight</b>	70.5 kDa
<b>Observed molecular weight</b>	66 kDa
<b>Tag</b>	N-His
<b>Bioactivity</b>	The specific activity was determined to be 5 nmol/min/mg using casein as substrate.

## Properties

<b>Purity</b>	> 90 % as determined by reducing SDS-PAGE.
<b>Endotoxin</b>	< 1.0 EU per µg of the protein as determined by the LAL method.
<b>Storage</b>	Store at < -20°C, stable for 6 months. Please minimize freeze-thaw cycles.
<b>Shipping</b>	This product is provided as liquid. It is shipped at frozen temperature with blue ice/gel packs. Upon receipt, store it immediately at < -20°C.
<b>Formulation</b>	Supplied as sterile solution of 50mM Tris, 100mM NaCl, pH 7.4, 0.5mM EDTA, 0.5mM EGTA, 0.5mM PMSF, 25% glycerol
<b>Reconstitution</b>	Not Applicable

## Data



> 90 % as determined by reducing SDS-PAGE.

## Background

Serine / threonine-protein kinase PLK1 / PLK-1, also known as polo-like kinase 1 (PLK-1) or serine / threonine-protein kinase 13 (STPK13), Polo-like kinases (PLKs), is a family of four serine / threonine protein kinases that are critical regulators of cell cycle progression, mitosis, cytokinesis, and the DNA damage response. PLK1 / PLK-1 is ubiquitously expressed. The mRNA and protein expression of PLK1 / PLK-1, -2 and -4 are coordinately regulated during cell cycle progression, but PLK3 levels are independent of the other three family members. PLK1 / PLK-1 is the most well characterized member of this family and strongly promotes the progression of cells through mitosis. During the various stages of mitosis PLK1 / PLK-1 localizes to the centrosomes, kinetochores and central spindle. Serine / threonine-protein kinase that performs several important functions throughout M phase of the cell cycle, including the regulation of centrosome maturation and spindle assembly, the removal of cohesins from chromosome arms, the inactivation of APC / C inhibitors, and the regulation of mitotic exit and cytokinesis. It is required for recovery after DNA damage checkpoint

## For Research Use Only

A Reliable Research Partner in Life Science and Medicine

Toll-free: 1-888-852-8623

Web: [www.elabscience.com](http://www.elabscience.com)

Tel: 1-832-243-6086

Email: [techsupport@elabscience.com](mailto:techsupport@elabscience.com)

Fax: 1-832-243-6017

# Recombinant Human PLK1/PLK-1 Protein (His Tag)

Catalog Number:PKSH030399



and entry into mitosis. PLK1 / PLK-1 is required for kinetochore localization of BUB1B, spindle pole localization of isoform 3 of SGOL1 and plays a role in regulating its centriole cohesion function. PLK1 / PLK-1 Phosphorylates BORA, and thereby promotes the degradation of BORA. PLK1 / PLK-1 also contributes to the regulation of AURKA function and phosphorylates SGOL1.

---

## For Research Use Only

A Reliable Research Partner in Life Science and Medicine

Toll-free: 1-888-852-8623

Web: [www.elabscience.com](http://www.elabscience.com)

Tel: 1-832-243-6086

Email: [techsupport@elabscience.com](mailto:techsupport@elabscience.com)

Fax: 1-832-243-6017