

Recombinant Human PLA2G2D Protein (Fc Tag)

Catalog Number:PKSH030829



Note: Centrifuge before opening to ensure complete recovery of vial contents.

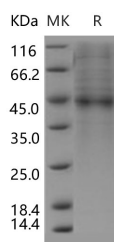
Description

Synonyms	PLA2IID;SPLA2-IID;SPLA2S;SPLASH
Species	Human
Expression Host	HEK293 Cells
Sequence	Met 1-Cys145
Accession	Q9UNK4
Calculated Molecular Weight	41.5 kDa
Observed molecular weight	44 kDa
Tag	C-hFc

Properties

Purity	> 85 % as determined by reducing SDS-PAGE.
Endotoxin	< 1.0 EU per µg of the protein as determined by the LAL method.
Storage	Generally, lyophilized proteins are stable for up to 12 months when stored at -20 to -80°C. Reconstituted protein solution can be stored at 4-8°C for 2-7 days. Aliquots of reconstituted samples are stable at < -20°C for 3 months.
Shipping	This product is provided as lyophilized powder which is shipped with ice packs.
Formulation	Lyophilized from sterile PBS, pH 7.4 Normally 5 % - 8 % trehalose, mannitol and 0.01% Tween80 are added as protectants before lyophilization. Please refer to the specific buffer information in the printed manual.
Reconstitution	Please refer to the printed manual for detailed information.

Data



> 85 % as determined by reducing SDS-PAGE.

Background

The enzyme oligosaccharyltransferase (dolichyl-diphosphooligosaccharide-protein glycosyltransferase) (DDOST), or 48-kDa subunit (OST48) is one of the catalytic subunits in this complex, exerts a typical type I membrane topology, containing a large luminal domain, a hydrophobic transmembrane domain and a short cytosolic peptide tail. DDOST/OST48 catalyzes the transfer of a high-mannose oligosaccharide (GlcNac2Man9Glc3) from a dolichol-linked oligosaccharide donor (dolichol-P-GlcNac2Man9Glc3) onto the asparagine acceptor site within an Asn-X-Ser/Thr consensus motif in nascent polypeptide chains across the membrane of the endoplasmic reticulum. The mammalian oligosaccharyltransferase (OST) is an oligomeric complex composed of three type I transmembrane proteins of the endoplasmic reticulum: ribophorin I (RI), ribophorin II (RII), and OST48. OST48 is not a glycoprotein and is not

For Research Use Only

A Reliable Research Partner in Life Science and Medicine

Toll-free: 1-888-852-8623

Web: www.elabscience.com

Tel: 1-832-243-6086

Email: techsupport@elabscience.com

Fax: 1-832-243-6017

Recombinant Human PLA2G2D Protein (Fc Tag)

Catalog Number: PKSH030829



recognized by antibodies to either ribophorin. Like ribophorins I and II, OST48 was found to be an integral membrane protein, with the majority of the polypeptide located within the lumen of the endoplasmic reticulum (ER). OST48 does not show significant amino acid sequence homology to either ribophorin I or II. It had been found that only the luminal domain of RI contains ER retention information. The dilysine motif in OST48 functions as an ER localization motif because OST48 in which the two lysine residues are replaced by serine (OST48ss) is no longer retained in the ER and is found instead also at the plasma membrane.

For Research Use Only

A Reliable Research Partner in Life Science and Medicine

Toll-free: 1-888-852-8623

Web: www.elabscience.com

Tel: 1-832-243-6086

Email: techsupport@elabscience.com

Fax: 1-832-243-6017