

PerCP/Cyanine5.5 Anti-Mouse CD279/PD-1 Antibody[29F.1A12]

Catalog Number: E-AB-F1131UJ

Note: Centrifuge before opening to ensure complete recovery of vial contents.

Description

Reactivity	Mouse
Host	Rat
Isotype	Rat IgG2a, κ
Clone No.	29F.1A12
Isotype Control	PerCP/Cyanine5.5 Rat IgG2a, κ Isotype Control[2A3] [Product E-AB-F09833J]
Conjugation	PerCP/Cyanine 5.5
Conjugation Information	PerCP/Cyanine5.5 is designed to be excited by the blue laser (488 nm) and detected using an optical filter centered near 675 nm (e.g., a 690/50 nm bandpass filter).
Storage Buffer	Phosphate buffered solution, pH 7.2, containing 0.09% sodium azide and 1% BSA.

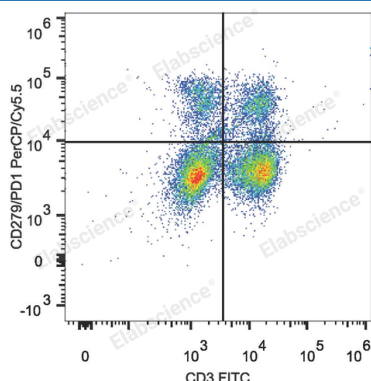
Applications

Recommended usage

FCM

Each lot of this antibody is quality control tested by flow cytometric analysis. Please check your vial before the experiment. Since applications vary, the appropriate dilutions must be determined for individual use. We suggest each investigator should titrate the reagent to obtain optimal results [The recommended concentration is 0.1-1 μg/10⁶ cells in 100 μL volume].

Data



C57BL/6 murine splenocytes are stained with PerCP/Cyanine5.5 Anti-Mouse CD279/PD-1 Antibody FITC Anti-Mouse CD3 Antibody.

Preparation & Storage

Storage	Keep as concentrated solution. This product can be stored at 2-8°C for 12 months. Please protected from prolonged exposure to light and do not freeze.
Shipping	Ice bag

Antigen Information

Alternate Names	Programmed Death-1;PD-1
Uniprot ID	Q02242
Gene ID	18566

For Research Use Only

Background

CD279, also known as programmed death-1 (PD-1), is a 50-55 kD glycoprotein belonging to the CD28 family of the Ig superfamily. PD-1 is expressed on activated splenic T and B cells and thymocytes. It is induced on activated myeloid cells as well. PD-1 is involved in lymphocyte clonal selection and peripheral tolerance through binding its ligands, B7-H1 (PD-L1) and B7-DC (PD-L2). It has been reported that PD-1 and PD-L1 interactions are critical to positive selection and play a role in shaping the T cell repertoire. PD-L1 negative costimulation is essential for prolonged survival of intratesticular islet allografts.