

# GMFB Polyclonal Antibody

catalog number: E-AB-52314

**Note:** Centrifuge before opening to ensure complete recovery of vial contents.

## Description

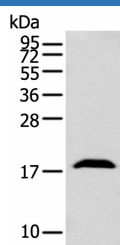
<b>Reactivity</b>	Human;Mouse;Rat
<b>Immunogen</b>	Fusion protein of human GMFB
<b>Host</b>	Rabbit
<b>Isotype</b>	IgG
<b>Purification</b>	Antigen affinity purification
<b>Conjugation</b>	Unconjugated
<b>buffer</b>	Phosphate buffered solution, pH 7.4, containing 0.05% stabilizer and 50% glycerol.

## Applications

## Recommended Dilution

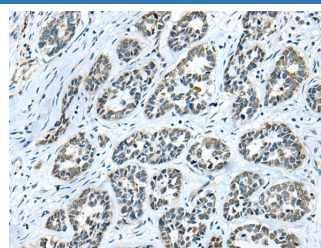
<b>WB</b>	1:500-1:2000
<b>IHC</b>	1:10-1:50

## Data



Western blot analysis of Mouse brain tissue using GMFB Polyclonal Antibody at dilution of 1:250

**Observed-MV: Refer to figures**  
**Calculated-MV: 17 kDa**



Immunohistochemistry of paraffin-embedded Human esophagus cancer tissue using GMFB Polyclonal Antibody at dilution of 1:25 (x200)

## Preparation & Storage

<b>Storage</b>	Store at -20°C Valid for 12 months. Avoid freeze / thaw cycles.
<b>Shipping</b>	The product is shipped with ice pack, upon receipt, store it immediately at the temperature recommended.

## Background

GMFB, Glia maturation factor beta, is a nerve growth factor implicated in nervous system development. It was reported that GMF-beta promotes the phenotypic expression of glia and neurons and inhibits the proliferation of their respective tumors in culture cells. GMF-beta protein is specific to the brain where it is expressed in glial cells (mainly astrocytes) and in some neurons. Higher levels of GMFB were found in the central nervous system, except for the spinal cord, and in thymus and colon.

## For Research Use Only