

# Recombinant Rat IL-2 Protein(His Tag)

Catalog Number: PDER100253

**Note:** Centrifuge before opening to ensure complete recovery of vial contents.

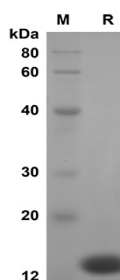
## Description

<b>Species</b>	Rat
<b>Source</b>	E.coli-derived Rat IL-2 protein Ala21-Gln155, with an N-terminal His
<b>Mol_Mass</b>	14.7 kDa
<b>Accession</b>	P17108
<b>Bio-activity</b>	Not validated for activity

## Properties

<b>Purity</b>	> 95% as determined by reducing SDS-PAGE.
<b>Endotoxin</b>	< 10 EU/mg of the protein as determined by the LAL method
<b>Storage</b>	Generally, lyophilized proteins are stable for up to 12 months when stored at -20 to -80 °C. Reconstituted protein solution can be stored at 4-8°C for 2-7 days. Aliquots of reconstituted samples are stable at < -20°C for 3 months.
<b>Shipping</b>	This product is provided as lyophilized powder which is shipped with ice packs.
<b>Formulation</b>	Lyophilized from a 0.2 µm filtered solution in PBS with 5% Trehalose and 5% Mannitol.
<b>Reconstitution</b>	It is recommended that sterile water be added to the vial to prepare a stock solution of 0.5 mg/mL. Concentration is measured by UV-Vis

## Data



SDS-PAGE analysis of Rat IL-2 proteins, 2µg/lane of Recombinant Rat IL-2 proteins was resolved with SDS-PAGE under reducing conditions, showing bands at 14 kDa

## Background

Interleukin-2, also known as a T-cell growth factor, TCGF, Aldesleukin, and IL2, is a secreted protein that belongs to the IL-2 family. Interleukin-2 / IL-2 was the first interleukin molecule to be discovered. Interleukin-2 / IL-2 molecule was first purified to homogeneity by immunoaffinity chromatography by Kendall Smith and his team at Dartmouth Medical School. Interleukin-2 / IL-2 was also the first cytokine shown to mediate its effects via a specific IL-2 receptor, and it was also the first interleukin to be cloned and expressed from a complementary DNA (cDNA) library. Interleukin-2 / IL-2 was designated number 2 because Smith's data at the time indicated that IL-1, produced by macrophages, facilitates IL-2 production by T lymphocytes (T cells).

## For Research Use Only