

MAP2K6 Polyclonal Antibody

catalog number: E-AB-10446

Note: Centrifuge before opening to ensure complete recovery of vial contents.

Description

Reactivity	Human;Mouse
Immunogen	Recombinant protein of human MAP2K6
Host	Rabbit
Isotype	IgG
Purification	Affinity purification
Buffer	Phosphate buffered solution, pH 7.4, containing 0.05% stabilizer and 50% glycerol.

Applications

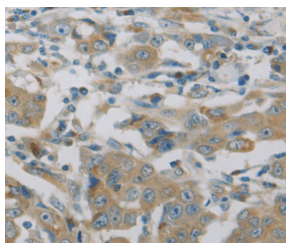
Applications	Recommended Dilution
WB	1:500-1:2000
IHC	1:25-1:100

Data



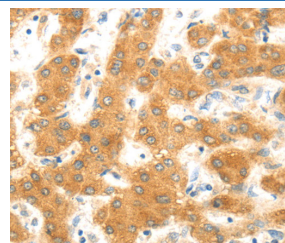
Western Blot analysis of Mouse muscle tissue using MAP2K6 Polyclonal Antibody at dilution of 1:500

Calculated-MW:37 kDa



Immunohistochemistry of paraffin-embedded Human breast cancer using MAP2K6 Polyclonal Antibody at dilution of

1:30



Immunohistochemistry of paraffin-embedded Human liver cancer using MAP2K6 Polyclonal Antibody at dilution of

1:30

Preparation & Storage

Storage	Store at -20°C Valid for 12 months. Avoid freeze / thaw cycles.
Shipping	The product is shipped with ice pack, upon receipt, store it immediately at the temperature recommended.

Background

For Research Use Only

This gene encodes a member of the dual specificity protein kinase family, which functions as a mitogen-activated protein (MAP) kinase kinase. MAP kinases, also known as extracellular signal-regulated kinases (ERKs), act as an integration point for multiple biochemical signals. This protein phosphorylates and activates p38 MAP kinase in response to inflammatory cytokines or environmental stress. As an essential component of p38 MAP kinase mediated signal transduction pathway, this gene is involved in many cellular processes such as stress induced cell cycle arrest, transcription activation and apoptosis.

For Research Use Only

Toll-free: 1-888-852-8623
Web: www.elabscience.com

Tel: 1-832-243-6086
Email: techsupport@elabscience.com

Fax: 1-832-243-6017

Rev. V1.8