

Recombinant Human CD3 ϵ /CD3E Protein (Fc Tag)

Catalog Number:PKSH032212



Note: Centrifuge before opening to ensure complete recovery of vial contents.

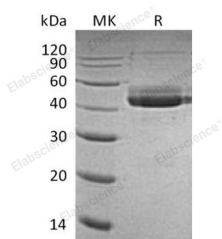
Description

Synonyms	T-Cell Surface Glycoprotein CD3 Epsilon Chain;T-Cell Surface Antigen T3/Leu-4 Epsilon Chain;CD3 ϵ ;CD3E;T3E;CD3 epsilon;IMD18
Species	Human
Expression Host	HEK293 Cells
Sequence	Asp23-Asp126
Accession	P07766
Calculated Molecular Weight	38.7 kDa
Observed molecular weight	40-50 kDa
Tag	C-Fc
Bioactivity	Immobilized Human Human CD3E-Fc at 2 μ g/ml (100 μ l/well)can bind Anti-Human/Monkey CD3E mAb.The ED ₅₀ of Anti-Human/Monkey CD3E mAb is 0.51 μ g/ml.

Properties

Purity	> 95 % as determined by reducing SDS-PAGE.
Endotoxin	< 1.0 EU per μ g of the protein as determined by the LAL method.
Storage	Generally, lyophilized proteins are stable for up to 12 months when stored at -20 to -80°C. Reconstituted protein solution can be stored at 4-8°C for 2-7 days. Aliquots of reconstituted samples are stable at < -20°C for 3 months.
Shipping	This product is provided as lyophilized powder which is shipped with ice packs.
Formulation	Lyophilized from a 0.2 μ m filtered solution of PBS, pH 7.4. Normally 5 % - 8 % trehalose, mannitol and 0.01% Tween80 are added as protectants before lyophilization. Please refer to the specific buffer information in the printed manual.
Reconstitution	Please refer to the printed manual for detailed information.

Data



> 95 % as determined by reducing SDS-PAGE.

Background

T-Cell Surface Glycoprotein CD3 ϵ Chain (CD3 ϵ) is a single-pass type I membrane protein. CD3 ϵ contains 1 Ig-like (immunoglobulin-like) domain and 1 ITAM domain. CD3 ϵ is a polypeptide encoded by the CD3E gene on chromosome 11 in humans. The T cell receptor-CD3 complex (TCR/CD3 complex) is involved in T-cell development and several intracellular signal-transduction pathways. This complex is critical for T-cell development and function, and represents

For Research Use Only

A Reliable Research Partner in Life Science and Medicine

Toll-free: 1-888-852-8623

Web: www.elabscience.com

Tel: 1-832-243-6086

Email: techsupport@elabscience.com

Fax: 1-832-243-6017

Recombinant Human CD3 ζ /CD3E Protein (Fc Tag)

Catalog Number: PKSH032212



one of the most complex transmembrane receptors. The T cell receptor-CD3 complex is unique in having ten cytoplasmic immunoreceptor tyrosine-based activation motifs (ITAMs). TCR/CD3 complex plays an important role in coupling antigen recognition to several intracellular signal-transduction pathways.

For Research Use Only

A Reliable Research Partner in Life Science and Medicine

Toll-free: 1-888-852-8623

Tel: 1-832-243-6086

Fax: 1-832-243-6017

Web: www.elabscience.com

Email: techsupport@elabscience.com