

# Recombinant Human Galectin-14/LGALS14 Protein (His Tag)



Catalog Number: PKSH032472

**Note:** Centrifuge before opening to ensure complete recovery of vial contents.

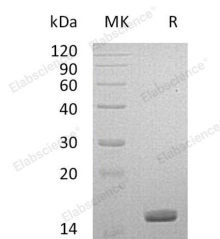
## Description

<b>Synonyms</b>	Placental Protein 13-Like; Charcot-Leyden Crystal Protein 2; CLC2; Galectin-14; Gal-14; LGALS14; PPL13
<b>Species</b>	Human
<b>Expression Host</b>	HEK293 Cells
<b>Sequence</b>	Met 1-Asp139
<b>Accession</b>	AAH22257.1
<b>Calculated Molecular Weight</b>	17.1 kDa
<b>Observed molecular weight</b>	16 kDa
<b>Tag</b>	C-His

## Properties

<b>Purity</b>	> 95 % as determined by reducing SDS-PAGE.
<b>Endotoxin</b>	< 1.0 EU per µg of the protein as determined by the LAL method.
<b>Storage</b>	Store at < -20°C, stable for 6 months. Please minimize freeze-thaw cycles.
<b>Shipping</b>	This product is provided as liquid. It is shipped at frozen temperature with blue ice/gel packs. Upon receipt, store it immediately at < -20°C.
<b>Formulation</b>	Supplied as a 0.2 µm filtered solution of 20mM Tris-HCl, 100mM NaCl, 1mM DTT, 20% Glycerol, pH 8.0.
<b>Reconstitution</b>	Not Applicable

## Data



> 95 % as determined by reducing SDS-PAGE.

## Background

Galectin-14 is a member of the Galectin family of carbohydrate binding proteins. The members of Galectin family contain one or two carbohydrate recognition domains, which can bind  $\beta$ -Galactoside. LGALS14 is expressed intracellularly in placenta and eosinophils, and is released by eosinophils following allergen stimulation. LGALS14 may be involved in the development of allergic inflammation. Two alternatively spliced transcript variants encoding distinct isoforms have been observed.

## For Research Use Only

A Reliable Research Partner in Life Science and Medicine

Toll-free: 1-888-852-8623

Web: [www.elabscience.com](http://www.elabscience.com)

Tel: 1-832-243-6086

Email: [techsupport@elabscience.com](mailto:techsupport@elabscience.com)

Fax: 1-832-243-6017