

## PRIM1 Polyclonal Antibody

catalog number: **E-AB-91667**

**Note:** Centrifuge before opening to ensure complete recovery of vial contents.

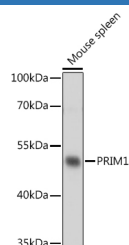
### Description

<b>Reactivity</b>	Human;Mouse
<b>Immunogen</b>	Recombinant fusion protein of human PRIM1
<b>Host</b>	Rabbit
<b>Isotype</b>	IgG
<b>Purification</b>	Affinity purification
<b>Buffer</b>	Phosphate buffered solution, pH 7.4, containing 0.05% stabilizer and 50% glycerol.

### Applications

<b>WB</b>	1:500-1:2000
-----------	--------------

### Data



Western blot analysis of extracts of Mouse spleen using  
PRIM1 Polyclonal Antibody at 1:1000 dilution.

**Observed-MV:49 kDa**

**Calculated-MV:49 kDa**

### Preparation & Storage

<b>Storage</b>	Store at -20°C Valid for 12 months. Avoid freeze / thaw cycles.
<b>Shipping</b>	The product is shipped with ice pack, upon receipt, store it immediately at the temperature recommended.

### Background

The replication of DNA in eukaryotic cells is carried out by a complex chromosomal replication apparatus, in which DNA polymerase alpha and primase are two key enzymatic components. Primase, which is a heterodimer of a small subunit and a large subunit, synthesizes small RNA primers for the Okazaki fragments made during discontinuous DNA replication. The protein encoded by this gene is the small, 49 kDa primase subunit.

### For Research Use Only