

# SST Polyclonal Antibody

catalog number: E-AB-53515

**Note:** Centrifuge before opening to ensure complete recovery of vial contents.

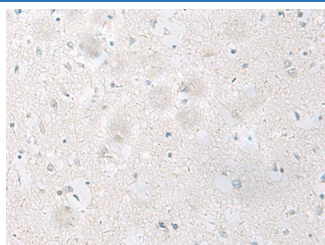
## Description

|                     |  |
|---------------------|--|
| <b>Reactivity</b>   | Human;Mouse;Rat  |
| <b>Immunogen</b>    | Synthetic peptide of human SST   |
| <b>Host</b>         | Rabbit   |
| <b>Isotype</b>      | IgG  |
| <b>Purification</b> | Antigen affinity purification  |
| <b>Conjugation</b>  | Unconjugated   |
| <b>buffer</b>       | Phosphate buffered solution, pH 7.4, containing 0.05% stabilizer and 50% glycerol. |

## Applications

|            |           |
|------------|-----------|
| <b>IHC</b> | 1:25-1:50 |
|------------|-----------|

## Data



Immunohistochemistry of paraffin-embedded Human brain tissue using SST Polyclonal Antibody at dilution of 1:60(×200)

## Preparation & Storage

|                 |  |
|-----------------|--|
| <b>Storage</b>  | Store at -20°C Valid for 12 months. Avoid freeze / thaw cycles.  |
| <b>Shipping</b> | The product is shipped with ice pack, upon receipt, store it immediately at the temperature recommended. |

## Background

The cyclic tetradecapeptide somatostatin is widely distributed throughout the body and is an important regulator of endocrine and nervous system function. It exerts its biologic actions by binding to specific high affinity receptors on the cell surface. Somatostatin inhibits the release of somatotropin. Somatostatin has also been shown in sympathetic nerves, mucosal cells, myenteric nerves of the gastrointestinal tract, salivary glands and in some parafollicular cells of the thyroid. Somatostatin positive cells may also be present in medullary thyroid carcinomas, C cell hyperplasia, thymic and lung tumors and pulmonary small cell carcinomas.

## For Research Use Only