

Recombinant Human UBE2S Protein (GST Tag)

Catalog Number:PKSH033189



Note: Centrifuge before opening to ensure complete recovery of vial contents.

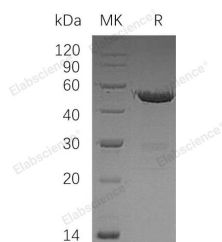
Description

Synonyms	Ubiquitin-Conjugating Enzyme E2 S;E2-EPF;Ubiquitin Carrier Protein S;Ubiquitin-Conjugating Enzyme E2-24 kDa;Ubiquitin-Conjugating Enzyme E2-EPF5;Ubiquitin-Protein Ligase S;UBE2S;E2EPF
Species	Human
Expression Host	E.coli
Sequence	Met 1-Leu222
Accession	Q16763
Calculated Molecular Weight	50.1 kDa
Observed molecular weight	50 kDa
Tag	N-GST

Properties

Purity	> 95 % as determined by reducing SDS-PAGE.
Endotoxin	< 1.0 EU per µg of the protein as determined by the LAL method.
Storage	Store at < -20°C, stable for 6 months. Please minimize freeze-thaw cycles.
Shipping	This product is provided as liquid. It is shipped at frozen temperature with blue ice/gel packs. Upon receipt, store it immediately at < - 20°C.
Formulation	Supplied as a 0.2 µm filtered solution of 50mM HEPES, 150mM NaCl, 2mM DTT, 10% Glycerol, pH 7.5.
Reconstitution	Not Applicable

Data



> 95 % as determined by reducing SDS-PAGE.

Background

Ubiquitin-Conjugating Enzyme E2 S (UBE2S) is a member of the Ubiquitin-Conjugating Enzyme family. UBE2S interacts with CDC20, FZR1/CDH1 and VHL. UBE2S can form a thiol ester linkage with Ubiquitin in an Ubiquitin Activating Enzyme-Dependent manner, a characteristic property of Ubiquitin Carrier Proteins. UBE2S acts as an essential factor of the Anaphase Promoting Complex/Cyclosome, a cell cycle-regulated Ubiquitin ligase that controls progression through mitosis. UBE2S is also involved in ubiquitination and subsequent degradation of VHL, resulting in an accumulation of HIF1A.

For Research Use Only

A Reliable Research Partner in Life Science and Medicine

Toll-free: 1-888-852-8623

Web: www.elabscience.com

Tel: 1-832-243-6086

Email: techsupport@elabscience.com

Fax: 1-832-243-6017