

ERCC1 Polyclonal Antibody

catalog number: E-AB-19768

Note: Centrifuge before opening to ensure complete recovery of vial contents.

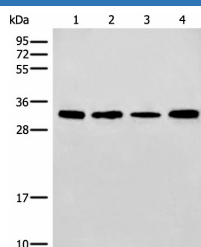
Description

Reactivity	Human;Mouse
Immunogen	Synthetic peptide of human ERCC1
Host	Rabbit
Isotype	IgG
Purification	Antigen affinity purification
Conjugation	Unconjugated
buffer	Phosphate buffered solution, pH 7.4, containing 0.05% stabilizer and 50% glycerol.

Applications Recommended Dilution

WB	1:500-1:2000
-----------	--------------

Data



Western blot analysis of 293T and NIH/3T3 cell Mouse liver tissue lysates using ERCC1 Polyclonal Antibody at dilution of 1:600

Observed-MV:Refer to figures

Calculated-MV:33 kDa

Preparation & Storage

Storage	Store at -20°C Valid for 12 months. Avoid freeze / thaw cycles.
Shipping	The product is shipped with ice pack,upon receipt,store it immediately at the temperature recommended.

Background

Excision Repair Cross Complementing 1 (ERCC1) is a structure-specific endonuclease that is responsible for the 5'-incision during DNA repair. It forms a complex with ERCC11,XPF and ERCC4,which are required in both recombinatorial repair and nucleotide excision repair. It has been found that ERCC1,together with RRM1,are determinants of survival after surgical treatment of early-stage,non-small-cell lung cancer. (Ref: Simon,ER. 2005)

For Research Use Only