

## Recombinant Human SULT1B1 Protein (His Tag)

Catalog Number: PKSH033361

**Note:** Centrifuge before opening to ensure complete recovery of vial contents.

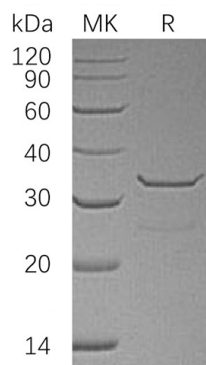
### Description

<b>Species</b>	Human
<b>Source</b>	E.coli-derived Human SULT1B1 protein Met 1-Ile296, with an N-terminal His
<b>Calculated MW</b>	36.3 kDa
<b>Observed MW</b>	28-35 kDa
<b>Accession</b>	AAH10895.1
<b>Bio-activity</b>	Not validated for activity

### Properties

<b>Purity</b>	> 95 % as determined by reducing SDS-PAGE.
<b>Concentration</b>	Subject to label value.
<b>Endotoxin</b>	< 1.0 EU per µg of the protein as determined by the LAL method.
<b>Storage</b>	Store at < -20°C, stable for 6 months. Please minimize freeze-thaw cycles.
<b>Shipping</b>	This product is provided as liquid. It is shipped at frozen temperature with blue ice/gel packs. Upon receipt, store it immediately at < - 20°C.
<b>Formulation</b>	Supplied as a 0.2 µm filtered solution of 20mM Tris-HCl, 100mM NaCl, pH 8.0.

### Data



> 95 % as determined by reducing SDS-PAGE.

### Background

Sulfotransferase Family Cytosolic 1B Member 1 (SULT1B1) is a cytosolic enzyme that belongs to the Sulfotransferase 1 family. Human SULT1B1 is a 296 amino acid protein that is highly expressed in the liver; peripheral blood leukocytes; colon; small intestine; and spleen. SULT1B1 utilizes 3'-phospho-5'-adenylyl sulfate (PAPS) as sulfonate donor; and it can catalyze the sulfate conjugation of many hormones; neurotransmitters; drugs; and xenobiotic compounds.