

SMOC1 Polyclonal Antibody

Catalog Number: E-AB-18835



Note: Centrifuge before opening to ensure complete recovery of vial contents.

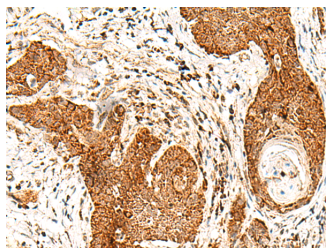
Description

Reactivity	Human, Mouse
Immunogen	Fusion protein of human SMOC1
Host	Rabbit
Isotype	IgG
Purification	Antigen affinity purification
Conjugation	Unconjugated
Formulation	PBS with 0.05% NaN ₃ and 40% Glycerol, pH7.4

Applications Recommended Dilution

IHC	1:50-1:300
ELISA	1:5000-1:10000

Data



Immunohistochemistry of paraffin-embedded Human esophagus cancer tissue using SMOC1 Polyclonal Antibody at dilution of 1:50(×200)

Preparation & Storage

Storage Store at -20°C. Avoid freeze / thaw cycles.

Background

This gene encodes a multi-domain secreted protein that may have a critical role in ocular and limb development. Mutations in this gene are associated with microphthalmia and limb anomalies. Alternatively spliced transcript variants encoding different isoforms have been found for this gene.

For Research Use Only

A Reliable Research Partner in Life Science and Medicine

Toll-free: 1-888-852-8623

Web: www.elabscience.com

Tel: 1-832-243-6086

Email: techsupport@elabscience.com

Fax: 1-832-243-6017