

BRI3BP Polyclonal Antibody

catalog number: E-AB-53455

Note: Centrifuge before opening to ensure complete recovery of vial contents.

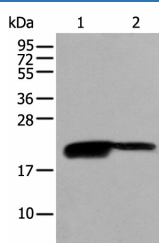
Description

Reactivity	Human;Mouse
Immunogen	Synthetic peptide of human BRI3BP
Host	Rabbit
Isotype	IgG
Purification	Antigen affinity purification
Conjugation	Unconjugated
buffer	Phosphate buffered solution, pH 7.4, containing 0.05% stabilizer and 50% glycerol.

Applications

Applications	Recommended Dilution
WB	1:500-1:2000
IHC	1:30-1:150

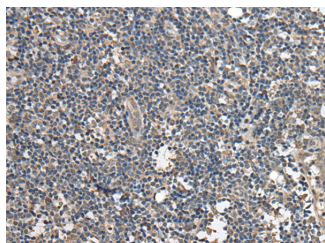
Data



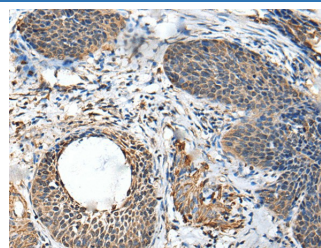
Western blot analysis of RAW264.7 and K562 cell lysates using BRI3BP Polyclonal Antibody at dilution of 1:500

Observed-MV: Refer to figures

Calculated-MV: 28 kDa



Immunohistochemistry of paraffin-embedded Human tonsil tissue using BRI3BP Polyclonal Antibody at dilution of 1:35(×200)



Immunohistochemistry of paraffin-embedded Human cervical cancer tissue using BRI3BP Polyclonal Antibody at dilution of 1:35(×200)

Preparation & Storage

Storage	Store at -20°C Valid for 12 months. Avoid freeze / thaw cycles.
Shipping	The product is shipped with ice pack, upon receipt, store it immediately at the temperature recommended.

Background

For Research Use Only

BRI3BP Polyclonal Antibody

catalog number: E-AB-53455



BRI3BP (BRI3 binding protein), also known as BNAS1, HCCR-1, I3-binding protein or cervical cancer 1 proto-oncogene-binding protein KG19, is a 251 amino acid multi-pass membrane protein. Though widely expressed, BRI3BP is found at highest levels in brain, kidney and liver where it localizes to the endoplasmic reticulum (ER) and is involved in ER structural dynamics and mitochondrial viability. Possessing pro-apoptotic properties and the ability to potentiate drug-induced apoptosis, BRI3BP overexpression has been shown to enhance caspase-3 and mitochondrial cytochrome c release in etoposide-treated human embryonic kidney 293T cells.

For Research Use Only

A Reliable Research Partner in Life Science and Medicine
Tel: 400-999-2100

Email: techsupport@elabscience.cn

Web: www.elabscience.cn

Rev. V1.7