

DSG2 Polyclonal Antibody

Catalog Number:E-AB-14949



Note: Centrifuge before opening to ensure complete recovery of vial contents.

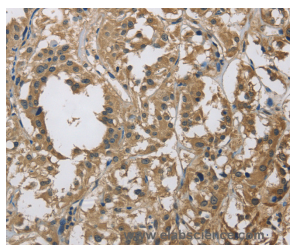
Description

Reactivity	Human
Immunogen	Recombinant protein of human DSG2
Host	Rabbit
Isotype	IgG
Purification	Affinity purification
Conjugation	Unconjugated
Formulation	PBS with 0.05% sodium azide and 50% glycerol, PH7.4

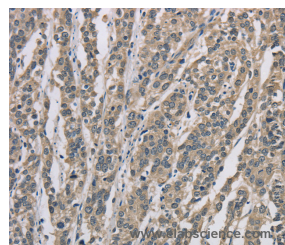
Applications Recommended Dilution

IHC	1:100-1:300
------------	-------------

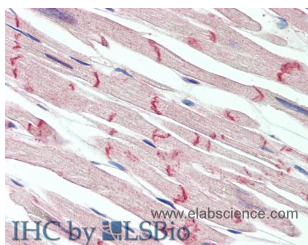
Data



Immunohistochemistry of paraffin-embedded Human thyroid cancer tissue using DSG2 Polyclonal Antibody at dilution 1:70



Immunohistochemistry of paraffin-embedded Human esophagus cancer tissue using DSG2 Polyclonal Antibody at dilution 1:70



Immunohistochemistry of paraffin-embedded Heart tissue using DSG2 Polyclonal Antibody at dilution of 1:150(Elabscience® Product Detected by Lifespan).



Immunohistochemistry of paraffin-embedded Prostate tissue using DSG2 Polyclonal Antibody at dilution of 1:150(Elabscience® Product Detected by Lifespan).

Preparation & Storage

Storage Store at -20°C. Avoid freeze / thaw cycles.

Background

Desmosomes are cell-cell junctions between epithelial, myocardial, and certain other cell types. This gene product is a calcium-binding transmembrane glycoprotein component of desmosomes in vertebrate epithelial cells. Currently, three desmoglein subfamily members have been identified and all are members of the cadherin cell adhesion molecule superfamily. These desmoglein gene family members are located in a cluster on chromosome 18. This second family

For Research Use Only

A Reliable Research Partner in Life Science and Medicine

Toll-free: 1-888-852-8623

Web: www.elabscience.com

Tel: 1-832-243-6086

Email: techsupport@elabscience.com

Fax: 1-832-243-6017

DSG2 Polyclonal Antibody

Catalog Number: E-AB-14949



member is expressed in colon, colon carcinoma, and other simple and stratified epithelial-derived cell lines.

For Research Use Only

A Reliable Research Partner in Life Science and Medicine

Toll-free: 1-888-852-8623

Tel: 1-832-243-6086

Fax: 1-832-243-6017

Web: www.elabscience.com

Email: techsupport@elabscience.com