

Note: Centrifuge before opening to ensure complete recovery of vial contents.

Description

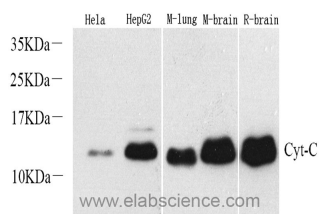
Reactivity	Human, Mouse, Rat
Immunogen	KLH conjugated Synthetic peptide corresponding to Mouse Cytochrome c
Host	Rabbit
Isotype	IgG
Purification	Affinity purification
Conjugation	Unconjugated
Formulation	PBS with 0.02% sodium azide, 1% protective protein and 50% glycerol, pH7.4

Applications

Recommended Dilution

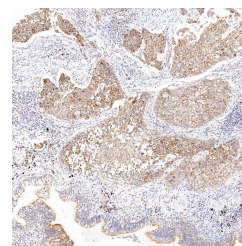
WB	1:500-1:2000
IHC	1:500-1:1000
IF	1:200-1:800

Data

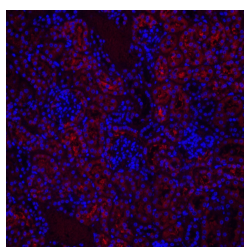


Western Blot analysis of various samples using CYCS Polyclonal Antibody at dilution of 1:1000.

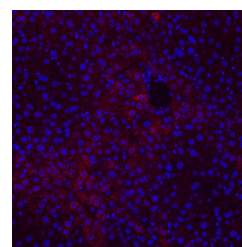
Observed Mw: 12kDa
Calculated Mw: 12kDa



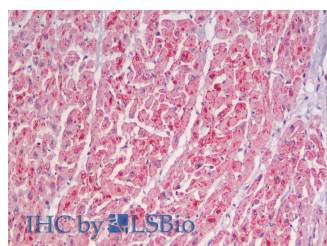
Immunohistochemistry analysis of paraffin-embedded human lung cancer using CYCS Polyclonal Antibody at dilution of 1:1000.



Immunofluorescence analysis of paraffin-embedded mouse kidney using CYCS Polyclonal Antibody at dilution of 1:500.



Immunofluorescence analysis of paraffin-embedded mouse liver using CYCS Polyclonal Antibody at dilution of 1:500.



IHC by ELABSCIENCE

For Research Use Only

A Reliable Research Partner in Life Science and Medicine

Toll-free: 1-888-852-8623

Web: www.elabscience.com

Tel: 1-832-243-6086

Email: techsupport@elabscience.com

Fax: 1-832-243-6017

CYCS Polyclonal Antibody

Catalog Number: E-AB-70033 1 Publications



Immunohistochemistry analysis of paraffin-embedded Human Heart using CYCS Polyclonal Antibody (Elabscience® Product Detected by Lifespan).

Preparation & Storage

Storage Store at -20°C. Avoid freeze / thaw cycles.

Background

Cytochrome c is a 12-15 kDa electron transporting protein located in the inner mitochondrial membrane. Upon apoptotic stimulation, cytochrome c can be released from mitochondria into cytoplasm, resulting in caspase-3 activation and apoptosis. Measurement of cytochrome c release from the mitochondria is useful for detection of the onset of apoptosis in cells. In addition, cytochrome c can also leave cells and be detectable in extra-cellular medium of apoptotic cells and serum of cancer patients. The level of serum cytochrome c may serve as a prognostic marker during cancer therapy.

For Research Use Only

A Reliable Research Partner in Life Science and Medicine

Toll-free: 1-888-852-8623

Web: www.elabscience.com

Tel: 1-832-243-6086

Email: techsupport@elabscience.com

Fax: 1-832-243-6017