

ARL1 Polyclonal Antibody

catalog number: E-AB-53608

Note: Centrifuge before opening to ensure complete recovery of vial contents.

Description

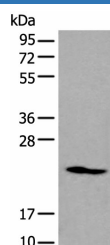
| | |
|---------------------|------------------------------------------------------------------------------------|
| Reactivity | Human;Mouse;Rat |
| Immunogen | Synthetic peptide of human ARL1 |
| Host | Rabbit |
| Isotype | IgG |
| Purification | Antigen affinity purification |
| Conjugation | Unconjugated |
| buffer | Phosphate buffered solution, pH 7.4, containing 0.05% stabilizer and 50% glycerol. |

Applications

Recommended Dilution

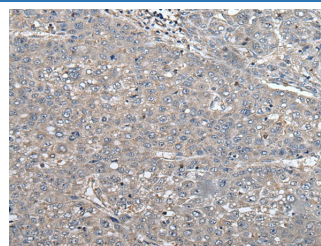
| | |
|------------|--------------|
| WB | 1:500-1:2000 |
| IHC | 1:40-1:200 |

Data



Western blot analysis of K562 cell lysate using ARL1 Polyclonal Antibody at dilution of 1:550

Observed-MV:Refer to figures
Calculated-MV:20 kDa



Immunohistochemistry of paraffin-embedded Human liver cancer tissue using ARL1 Polyclonal Antibody at dilution of 1:50(×200)

Preparation & Storage

| | |
|-----------------|--------------------------------------------------------------------------------------------------------|
| Storage | Store at -20°C Valid for 12 months. Avoid freeze / thaw cycles. |
| Shipping | The product is shipped with ice pack,upon receipt,store it immediately at the temperature recommended. |

Background

The protein encoded by this gene belongs to the ARL (ADP-ribosylation factor-like) family of proteins, which are structurally related to ADP-ribosylation factors (ARFs). ARFs, described as activators of cholera toxin (CT) ADP-ribosyltransferase activity, regulate intracellular vesicular membrane trafficking, and stimulate a phospholipase D (PLD) isoform. Although, ARL proteins were initially thought not to activate CT or PLD, later work showed that they are weak stimulators of PLD and CT in a phospholipid dependent manner. Alternative splicing results in multiple transcript variants encoding different isoforms.

For Research Use Only