

## ATG7 Monoclonal Antibody

**catalog number: E-AB-22151**

**Note:** Centrifuge before opening to ensure complete recovery of vial contents.

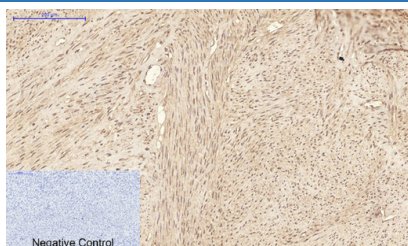
### Description

<b>Reactivity</b>	Human;Mouse;Rat
<b>Immunogen</b>	Recombinant Protein of ATG7
<b>Host</b>	Mouse
<b>Isotype</b>	IgG
<b>Clone</b>	1A1
<b>Purification</b>	Protein A purification
<b>Buffer</b>	Phosphate buffered solution, pH 7.4, containing 0.05% stabilizer, 0.5% protein protectant and 50% glycerol.

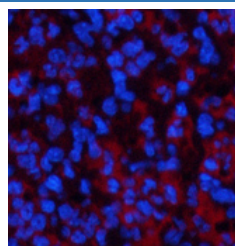
### Applications

Applications	Recommended Dilution
IHC	1:50-300
IF	1:50-1:200

### Data



Immunohistochemistry of paraffin-embedded Human uterus tissue using ATG7 Monoclonal Antibody at dilution of 1:200.



Immunofluorescence analysis of Mouse spleen tissue using ATG7 Monoclonal Antibody at dilution of 1:200.

### Preparation & Storage

<b>Storage</b>	Store at -20°C Valid for 12 months. Avoid freeze / thaw cycles.
<b>Shipping</b>	The product is shipped with ice pack, upon receipt, store it immediately at the temperature recommended.

### Background

ATG7 (Autophagy Related 7) is a Protein Coding gene. Among its related pathways are Autophagy Pathway and Innate Immune System. GO annotations related to this gene include protein homodimerization activity and ubiquitin activating enzyme activity. This gene encodes an E1-like activating enzyme that is essential for autophagy and cytoplasmic to vacuole transport. The encoded protein is also thought to modulate p53-dependent cell cycle pathways during prolonged metabolic stress. It has been associated with multiple functions, including axon membrane trafficking, axonal homeostasis, mitophagy, adipose differentiation, and hematopoietic stem cell maintenance. Alternative splicing results in multiple transcript variants.

### For Research Use Only