

HTRA2 Polyclonal Antibody

catalog number: E-AB-90984

Note: Centrifuge before opening to ensure complete recovery of vial contents.

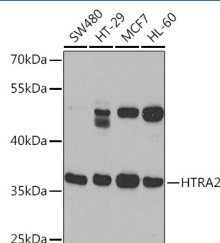
Description

Reactivity	Human;Mouse;Rat
Immunogen	Recombinant fusion protein of human HTRA2
Host	Rabbit
Isotype	IgG
Purification	Affinity purification
Buffer	Phosphate buffered solution, pH 7.4, containing 0.05% stabilizer and 50% glycerol.

Applications

Applications	Recommended Dilution
WB	1:500-1:2000
IP	1:50-1:100

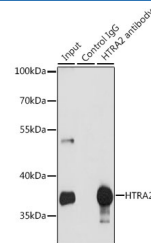
Data



Western blot analysis of extracts of various cell lines using HTRA2 Polyclonal Antibody at 1:1000 dilution.

Observed-MW:36 kDa

Calculated-MW:38 kDa/39 kDa/46 kDa/48 kDa



Immunoprecipitation analysis of 200ug extracts of MCF-7 cells using 3 ug HTRA2 Polyclonal Antibody. Western blot was performed from the immunoprecipitate using HTRA2 Polyclonal Antibody at a dilution of 1:1000.

Observed-MW:36 kDa

Calculated-MW:38 kDa/39 kDa/46 kDa/48 kDa

Preparation & Storage

Storage	Store at -20°C Valid for 12 months. Avoid freeze / thaw cycles.
Shipping	The product is shipped with ice pack, upon receipt, store it immediately at the temperature recommended.

Background

This gene encodes a serine protease. The protein has been localized in the endoplasmic reticulum and interacts with an alternatively spliced form of mitogen-activated protein kinase 14. The protein has also been localized to the mitochondria with release to the cytosol following apoptotic stimulus. The protein is thought to induce apoptosis by binding the apoptosis inhibitory protein baculoviral IAP repeat-containing 4. Nuclear localization of this protein has also been observed. Alternate splicing of this gene results in multiple transcript variants encoding different isoforms.

For Research Use Only