

BrdU Monoclonal Antibody

catalog number: AN005390L

Note: Centrifuge before opening to ensure complete recovery of vial contents.

Description

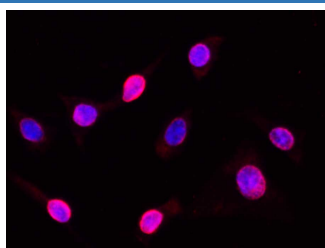
Reactivity	All
Immunogen	Synthetic peptide corresponding to human BrdU protein
Host	Mouse
Isotype	IgG2a
Clone	9C3
Purification	Protein A/G Purification
Conjugation	Unconjugated
Buffer	PBS with 0.05% proclin 300, 1% protective protein and 50% glycerol, pH7.4

Applications

Recommended Dilution

IF	1:200-1:400
-----------	-------------

Data



Immunofluorescence analysis of C6 cells incorporated with BrdU using BrdU Monoclonal Antibody at dilution of 1:100.

Preparation & Storage

Storage	Store at -20°C Valid for 12 months. Avoid freeze / thaw cycles.
Shipping	The product is shipped with ice pack, upon receipt, store it immediately at the temperature recommended.

Background

5-Bromo-2'-deoxyuridine (bromodeoxyuridine (BrdU)), a modified nucleotide and analog of thymidine, is commonly used for detecting proliferating cells. For detection, an anti-BrdU antibody (probe) with a fluorescent dye is applied to bind the BrdU label after DNA denaturation.