

ANO2 Polyclonal Antibody

catalog number: E-AB-66007

Note: Centrifuge before opening to ensure complete recovery of vial contents.

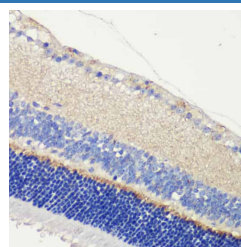
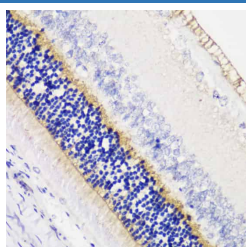
Description

Reactivity	Human;Mouse;Rat
Immunogen	Recombinant fusion protein of human ANO2 (NP_001265526.1).
Host	Rabbit
Isotype	IgG
Purification	Affinity purification
Buffer	Phosphate buffered solution, pH 7.4, containing 0.05% stabilizer and 50% glycerol.

Applications

Applications	Recommended Dilution
IHC	1:50-1:200

Data



Immunohistochemistry of paraffin-embedded Rat retina using ANO2 Polyclonal Antibody at dilution of 1:200 (40x lens). Immunohistochemistry of paraffin-embedded Mouse retina using ANO2 Polyclonal Antibody at dilution of 1:200 (40x lens).

Preparation & Storage

Storage	Store at -20°C Valid for 12 months. Avoid freeze / thaw cycles.
Shipping	The product is shipped with ice pack, upon receipt, store it immediately at the temperature recommended.

Background

ANO2 (Anoctamin 2) is a Protein Coding gene. Diseases associated with ANO2 include Von Willebrand Disease, Type 3 and Gnathodiaphyseal Dysplasia. Among its related pathways are Transport of glucose and other sugars, bile salts and organic acids, metal ions and amine compounds and Ion channel transport. Gene Ontology (GO) annotations related to this gene include protein homodimerization activity and intracellular calcium activated chloride channel activity. An important paralog of this gene is ANO1.

For Research Use Only