

Recombinant Human GFRRA2 Protein (His Tag)

Catalog Number: PKSH033430

Note: Centrifuge before opening to ensure complete recovery of vial contents.

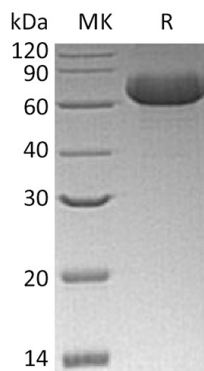
Description

| | |
|----------------------|--|
| Species | Human |
| Source | HEK293 Cells-derived Human GFRRA2 protein Ser22-Ser441, with an C-terminal His |
| Calculated MW | 47.8 kDa |
| Observed MW | 80 kDa |
| Accession | O00451 |
| Bio-activity | Not validated for activity |

Properties

| | |
|-----------------------|--|
| Purity | > 95 % as determined by reducing SDS-PAGE. |
| Endotoxin | < 1.0 EU per µg of the protein as determined by the LAL method. |
| Storage | Generally, lyophilized proteins are stable for up to 12 months when stored at -20 to -80 °C. Reconstituted protein solution can be stored at 4-8°C for 2-7 days. Aliquots of reconstituted samples are stable at < -20°C for 3 months. |
| Shipping | This product is provided as lyophilized powder which is shipped with ice packs. |
| Formulation | Lyophilized from a 0.2 µm filtered solution of 20mM PB, 150mM NaCl, pH 7.2. Normally 5% - 8% trehalose, mannitol and 0.01% Tween 80 are added as protectants before lyophilization. |
| | Please refer to the specific buffer information in the printed manual. |
| Reconstitution | Please refer to the printed manual for detailed information. |

Data



> 95 % as determined by reducing SDS-PAGE.

Background

Members of the glial cell line-derived neurotrophic factor (GDNF) family, including GDNF and Neurturin, play key roles in the control of vertebrate neuronal survival and differentiation. GDNF is a glycosylated, disulfide-bonded homodimer that is distantly related to the TGF superfamily of growth factors. Three receptors for these factors, GFRα-1, GFRα-2, and GFRα-3 have been identified. The receptors do not contain transmembrane domains and are attached to the cell membrane by glycosyl-phosphoinositol linkage. Both GFRα-1 and GFRα-2 have been shown to mediate the GDNF-dependent and Neurturin-dependent phosphorylation and activation of the tyrosine kinase Ret. GFR-3 is expressed only during development. GFRα-2 binds Neurturin and mediates activation of RET receptor tyrosine kinase by both Neurturin and GDNF.

For Research Use Only