

# NCR3 Polyclonal Antibody

Catalog Number: E-AB-14850



**Note:** Centrifuge before opening to ensure complete recovery of vial contents.

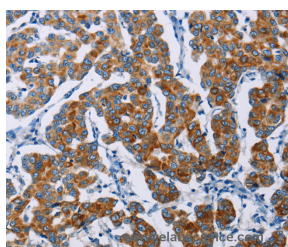
## Description

|                     |   |
|---------------------|---|
| <b>Reactivity</b>   | Human   |
| <b>Immunogen</b>    | Recombinant protein of human NCR3                   |
| <b>Host</b>         | Rabbit  |
| <b>Isotype</b>      | IgG   |
| <b>Purification</b> | Affinity purification                               |
| <b>Conjugation</b>  | Unconjugated  |
| <b>Formulation</b>  | PBS with 0.05% sodium azide and 50% glycerol, PH7.4 |

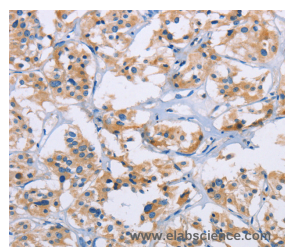
## Applications Recommended Dilution

|            |            |
|------------|------------|
| <b>IHC</b> | 1:50-1:200 |
|------------|------------|

## Data



Immunohistochemistry of paraffin-embedded Human breast cancer tissue using NCR3 Polyclonal Antibody at dilution 1:40



Immunohistochemistry of paraffin-embedded Human thyroid cancer tissue using NCR3 Polyclonal Antibody at dilution 1:40

## Preparation & Storage

**Storage** Store at -20°C. Avoid freeze / thaw cycles.

## Background

The protein encoded by this gene is a natural cytotoxicity receptor (NCR) that may aid NK cells in the lysis of tumor cells. The encoded protein interacts with CD3-zeta (CD247), a T-cell receptor. A single nucleotide polymorphism in the 5' untranslated region of this gene has been associated with mild malaria susceptibility. Three transcript variants encoding different isoforms have been found for this gene.

## For Research Use Only

A Reliable Research Partner in Life Science and Medicine

Toll-free: 1-888-852-8623

Web: [www.elabscience.com](http://www.elabscience.com)

Tel: 1-832-243-6086

Email: [techsupport@elabscience.com](mailto:techsupport@elabscience.com)

Fax: 1-832-243-6017