

PE/Cyanine5.5 Anti-Human CD25 Antibody[BC96]

Catalog Number: E-AB-F1194I

Note: Centrifuge before opening to ensure complete recovery of vial contents.

Description

Reactivity	Human
Host	Mouse
Isotype	Mouse IgG1, κ
Clone No.	BC96
Isotype Control	PE/Cyanine5.5 Mouse IgG1, κ Isotype Control[MOPC-21] [Product E-AB-F09792I]
Conjugation	PE/Cyanine 5.5
Conjugation Information	PE/Cyanine5.5 is designed to be excited by the Blue (488 nm), Green (532 nm) and yellow-green (561 nm) lasers and detected using an optical filter centered near 690 nm (e.g., a 690/50 nm bandpass filter).
Storage Buffer	Phosphate buffered solution, pH 7.2, containing 0.09% sodium azide and 1% BSA.

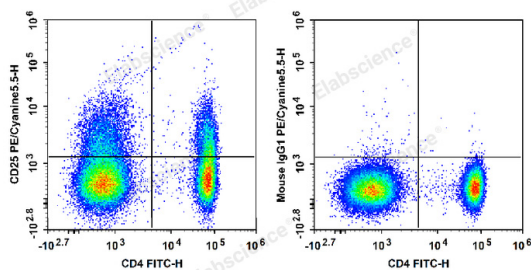
Applications

FCM

Recommended usage

Each lot of this antibody is quality control tested by flow cytometric analysis. **The amount of the reagent is suggested to be used 5 μL of antibody per test (million cells in 100 μL staining volume or per 100 μL of whole blood).** Please check your vial before the experiment. Since applications vary, the appropriate dilutions must be determined for individual use.

Data



Human peripheral blood lymphocytes are stained with FITC Anti-Human CD4 Antibody and PE/Cyanine5.5 Anti-Human CD25 Antibody (Left). Lymphocytes are stained with FITC Anti-Human CD4 Antibody and PE/Cyanine5.5 Mouse IgG1, κ Isotype Control (Right).

Preparation & Storage

Storage	Keep as concentrated solution. This product can be stored at 2-8°C for 12 months. Please protected from prolonged exposure to light and do not freeze.
Shipping	Ice bag

Antigen Information

Alternate Names	IL-2 receptor subunit alpha;IL-2-RA;IL-2R subunit alpha;IL2-RA;IL2RA;Interleukin-2 receptor subunit alpha;TAC antigen;p55
------------------------	---

For Research Use Only

Uniprot ID

P01589

Gene ID

3559

Background

CD25 is a 55 kD type I transmembrane glycoprotein also known as the low affinity IL-2 receptor α chain or Tac. It is expressed on progenitor lymphocytes, activated T and B cells, and activated monocytes/macrophages. CD25 is also expressed on a subset of non-stimulated CD4+ T cells termed T regulatory cells. CD25 associates with the IL-2 receptor β (CD122) and common γ chains (CD132) to form the high affinity IL-2R complex.